

# SHERPA 80 XL

# ARCADIA YACHTS



**PETREL GLOBAL SHIPS  
& BOATS TRADING LLC**

Office 621, 6th Floor Block A, Business Village.  
Port-Saeed Deira, Dubai UAE  
[www.petrel-global.com](http://www.petrel-global.com), tel.: +971 52 821 6411

# Lady Luck



# TECHNICAL DATA

Type	Semi-displacement
Hull	Material GRP
LOA, m	24,61
Beam, m	6,98
Draught, m	1,45
Fuel tank, l.	7 250
Water tank, l.	1 650
Engines 2 x Volvo IPS	1 050(1 350)
Generator	28+25 kW (32+24 kW)
Cruising speed, knots	18 (20)
Max speed, knots	20 (23)
Displacement, full load, t	71



LAYOUT

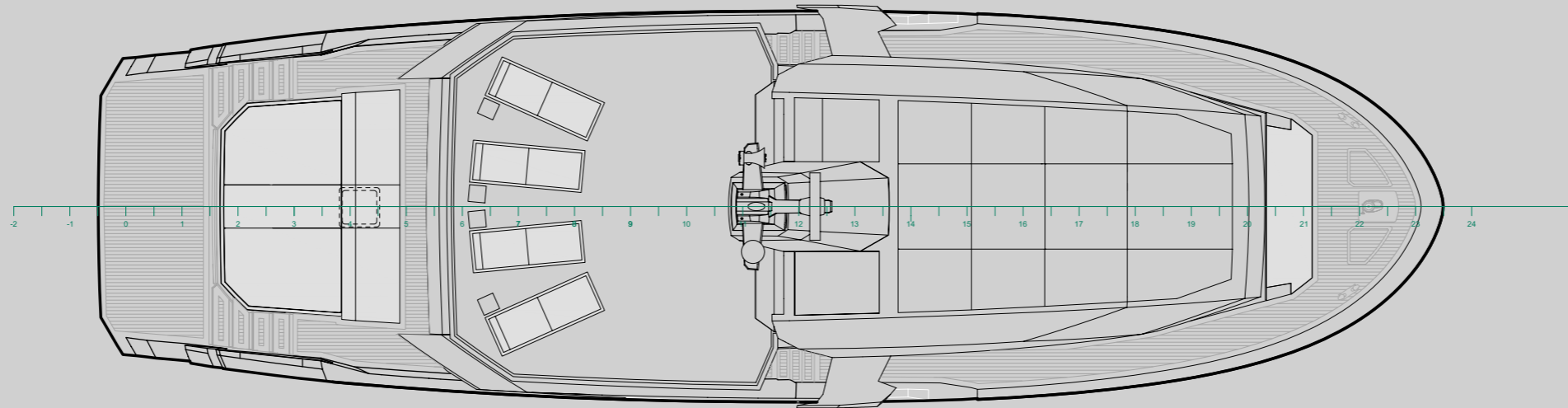
# ARCADIA SHERPA 80 XL



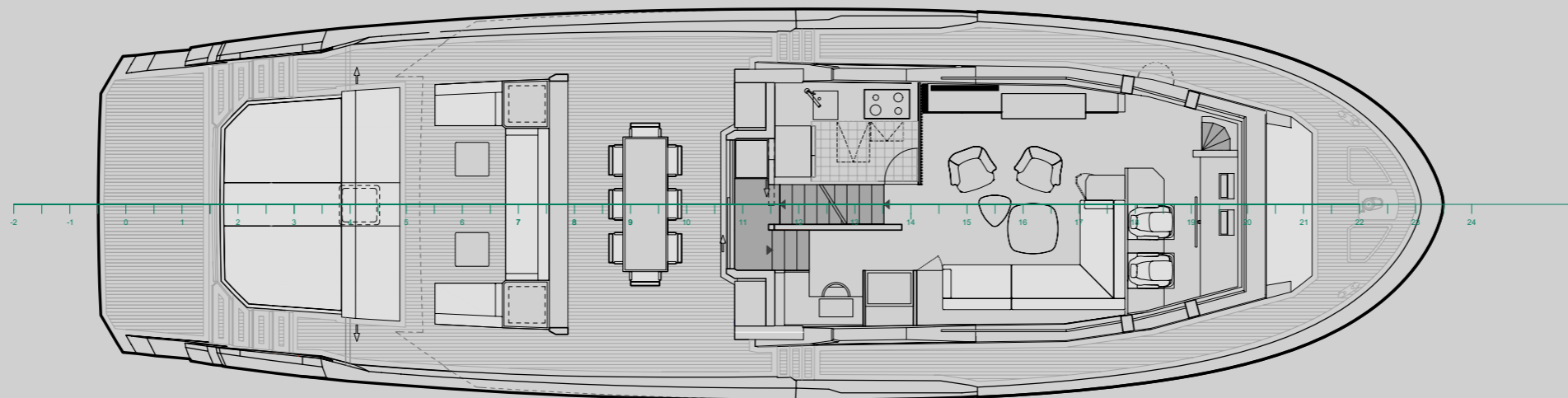


# LAYOUT

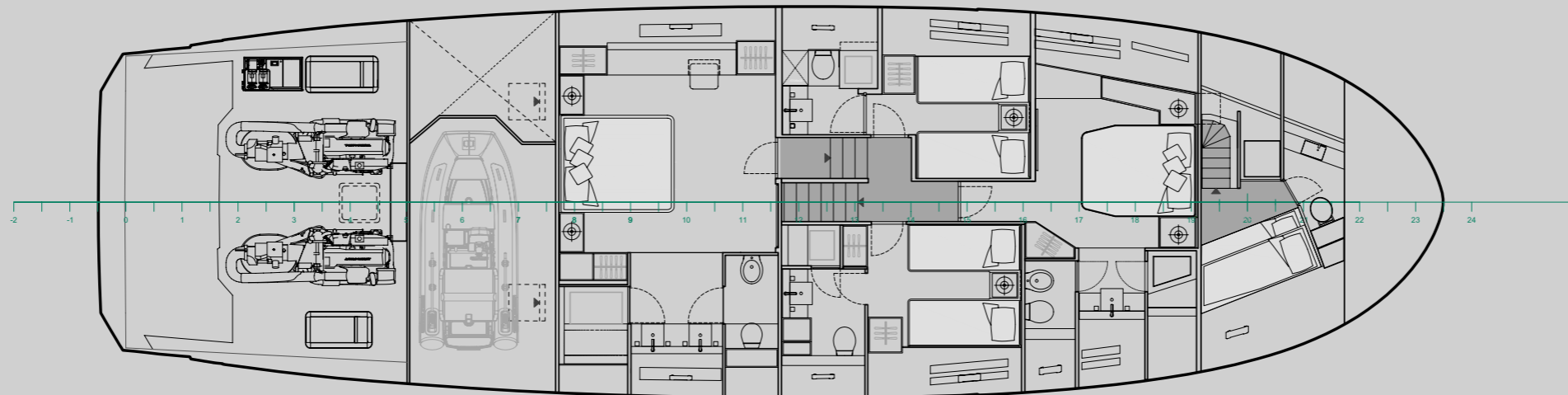
AVAILABLE OPTIONAL MODIFICATIONS



UPPER DECK



MAIN DECK



LOWER DECK



# OPTIONAL LAYOUT

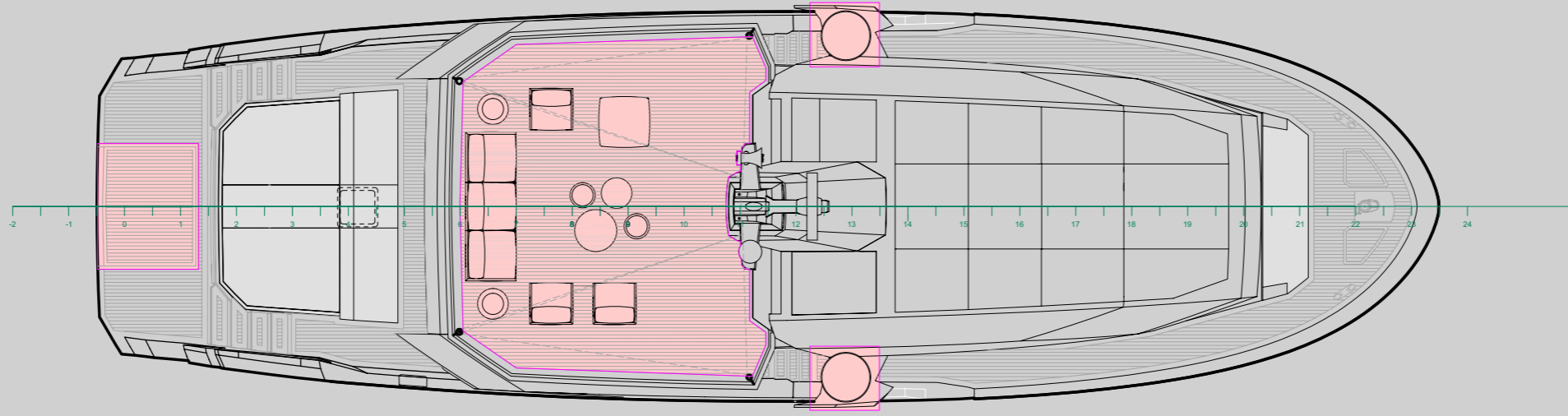
AVAILABLE OPTIONAL MODIFICATIONS



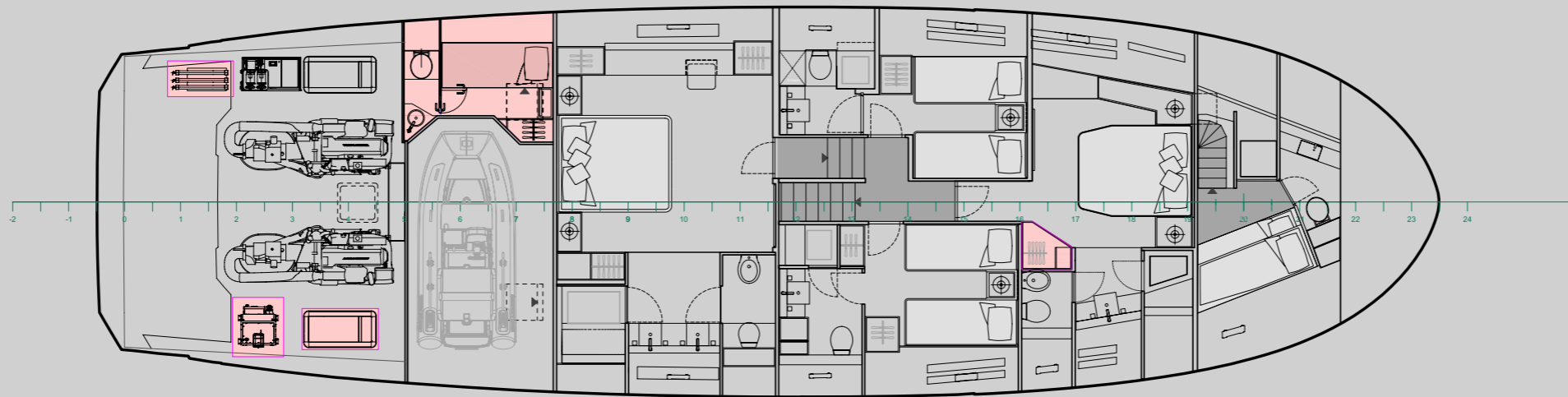
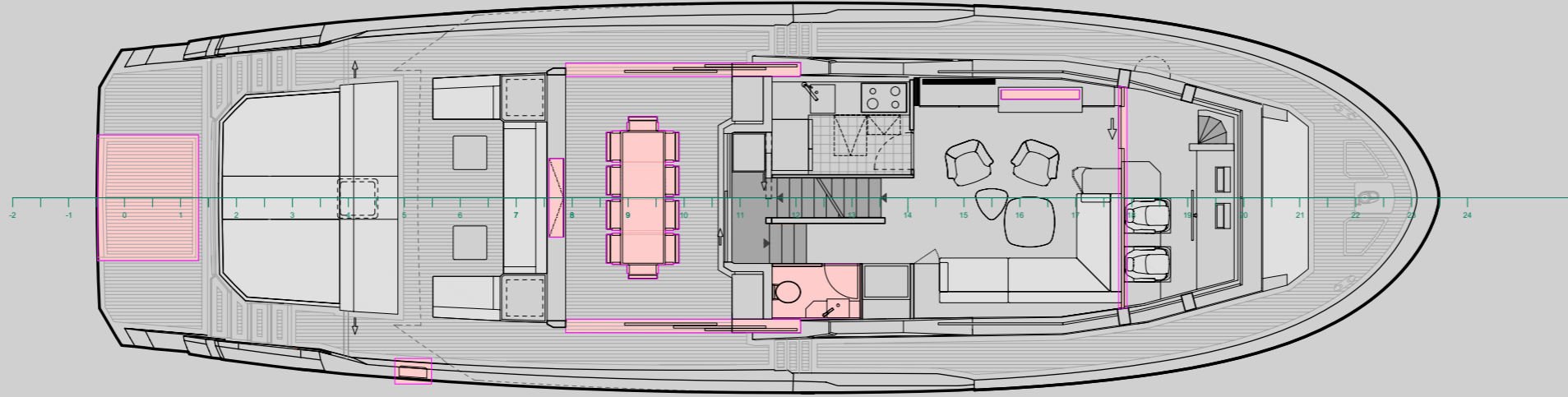


# OPTIONAL LAYOUT

DOAVAILABLE OPTIONAL MODIFICATIONS



MAIN DECK



LOWER DECK





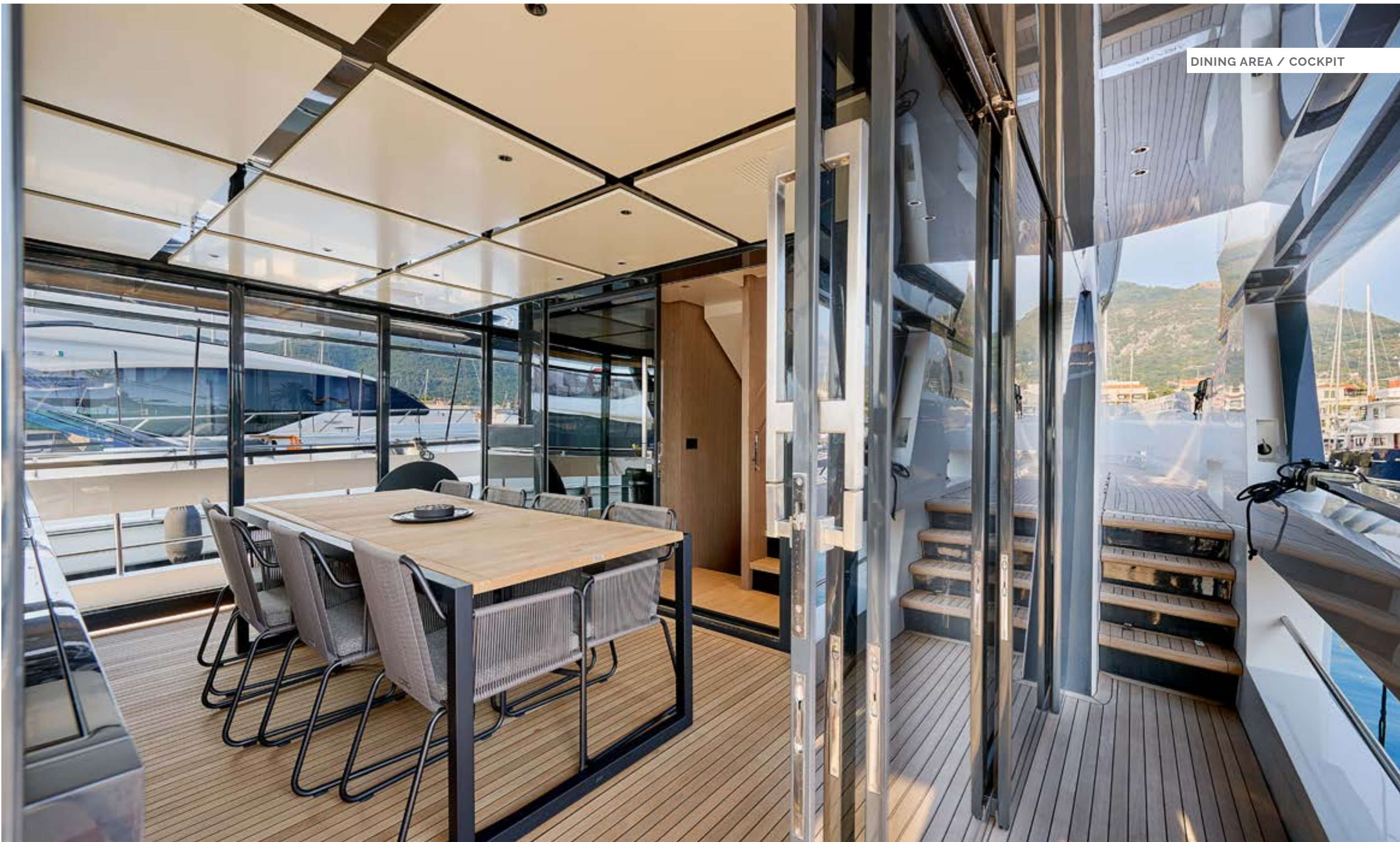




















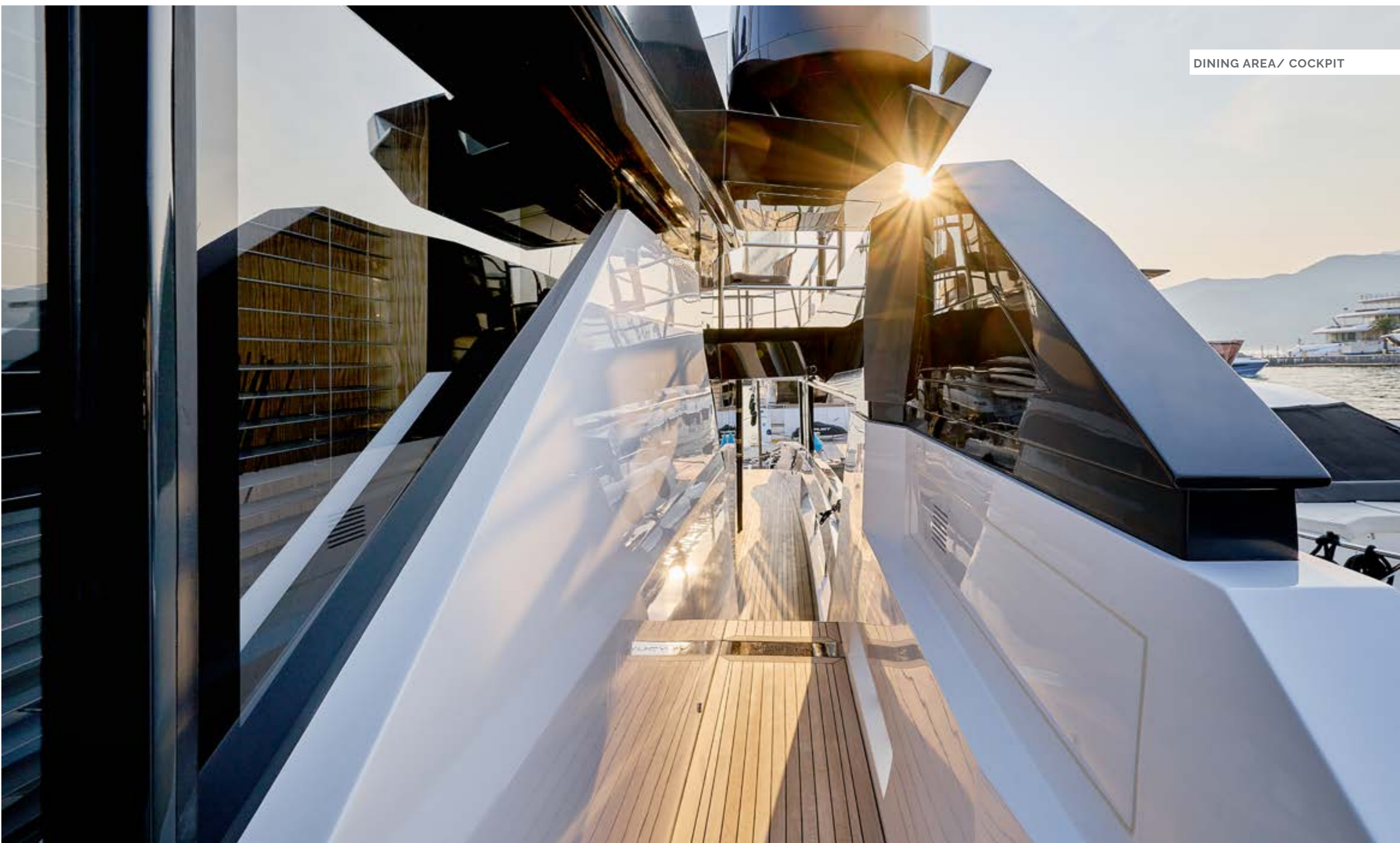
















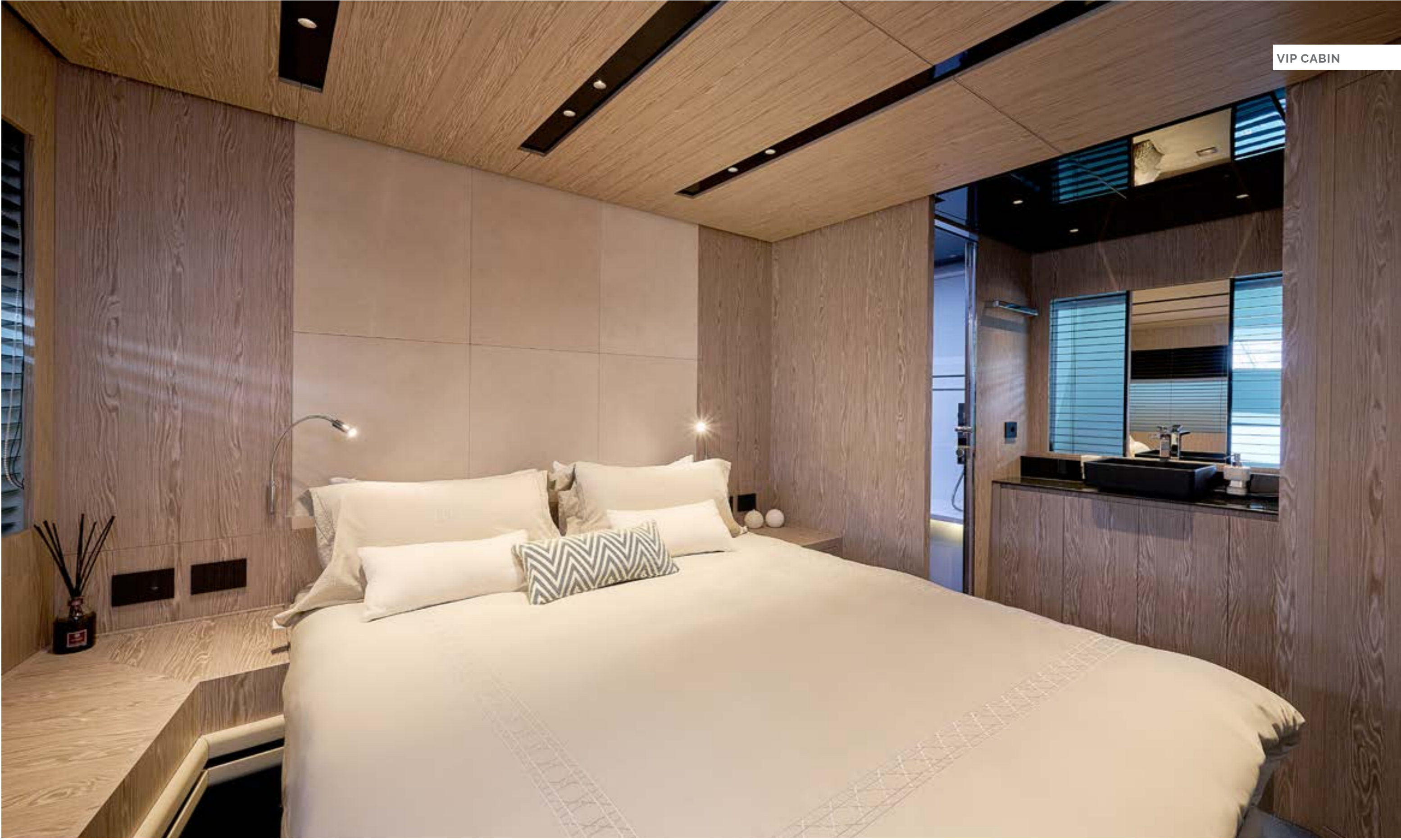


































SPECIFICATION

ARCADIA SHERPA 80 XL





## STANDARD EQUIPMENT

### BOW ZONE

Sofa with fibreglass base with cushions  
Electric anchor winch with chain washing system  
Washing lockers  
Teak flooring

### COCKPIT - DINING AREA

Table  
8 chairs  
Storage cupboard with doors  
Sliding glass door in polished non-rusting steel frame  
2 storage drawers in the front on the sides  
Ceiling LED lighting  
Teak floor covering 2 220V sockets

### COCKPIT LOUNGE

2 side sofas with fibreglass base and storage compartments  
Front sofa with fibreglass base and storage compartments  
2 coffee tables  
Garage and engine compartment access hatches LED decorative lighting  
LED ceiling lighting  
Fire control unit under the side sofa  
Teak flooring

### COCKPIT - SUNBATHING AREA

Large sunbathing sofa with cushions  
Front sofa  
2 storage compartments under the cushions  
Engine room access hatch in the centre of the cockpit  
2 passageways on the sides to the stern area  
Teak flooring  
Socket for shore power 220V Side mooring areas

### STERN AREA

2 side stairs  
2 stainless steel wicket doors

Retractable bathing ladder with handrail and teak steps  
Shower with mixer tap Teak floor covering

### FLYBRIDGE

Stainless steel handrail around the perimeter  
4 sun beds  
4 coffee tables decorative lighting 2 lamps  
2 storage cupboards  
Entrance door  
Non-slip coating

### SALON

L-shaped sofa  
2 coffee tables and 2 armchairs  
Large wardrobe with doors  
Storages on the port side  
Side sofa, drawers with shelves and doors  
Lacquered perimeter ceiling with polished aluminium frame with solar panels on the outside  
Ceiling blinds with motorised shutters  
LED ceiling lighting Table with armchair and shelves  
Wood panelled walls  
Sliding curtains on panoramic windows  
Stairs to flybridge  
Air conditioning with remote control and thermostat  
40' TV set  
Parquet on the floor  
4x 220V sockets  
2x USB sockets

### CORRIDOR IN FRONT OF THE CABINS

Teak steps, black matt metal treads  
Stainless steel handrails  
White lacquered walls  
Black lacquered ceiling panels  
Decorative step lighting  
LED corridor lighting  
LED ceiling lighting

LED aisle lighting  
Carpeted flooring

### FORWARD GUEST CABIN

Double bed with mattress, pillows and bed linen  
2 bedside tables  
Bedside reading lights on each side of the bed  
Cloakroom with coat rack and lighting  
Sanitary unit in the forward left side of the cabin  
Curtains on the porthole  
Lightproof curtains  
Lacquered and wood panelled walls Lacquered ceiling panels  
Side decorative LED lighting  
Ceiling LED lighting  
Carpeting on the floor  
Air conditioner with remote control and thermostat  
32' TV set  
3 220V sockets  
2 USB sockets

### GUEST CABIN BATHROOM

WC Bidet  
Side locker  
Mirror  
Laminate coated walls Lacquered ceiling panels  
LED ceiling lighting  
Laminate coated floor  
Extractor hood  
Shower cubicle separated by a glass door  
Laminate coated shower cubicle walls  
Sink with mixer tap on ceramic worktop  
Pedestal under the sink  
Standard washroom accessories  
Mirror above the sink  
Wooden finish walls  
Lacquered ceiling panels  
LED ceiling lighting





## STANDARD EQUIPMENT

220V socket outlet

### GUEST CABINS ON STARBOARD AND PORT SIDES

2 single beds with mattresses, pillows and bedding

Bedside tables

Wardrobe with coat rack and lights

2 bedside reading lights

Curtains on the porthole

Lightproof curtains

Lacquered ceiling panels

Lacquered and wood panelled walls

LED ceiling lighting

Carpeting on the floor

Air conditioner with remote control and thermostat 2 220V sockets

2 USB sockets

Pedestals under the washbasin

Standard set of washroom accessories

Side cabinet

Wall mirror

Porthole curtains

Laminated ceiling panels

Laminated shower cubicle walls

LED ceiling lighting

Laminate flooring

Extractor

220V socket

### MASTER'S CABIN

Double bed with mattress, pillows and bed linen

2 bedside tables

Reading lights on each side of the bed

Side tables

Side table with pouffe

Starboard storage

Curtains for porthole and panoramic windows

Lightproof curtains

Carpeting on the floor

Lacquered ceiling panels with wood panelling

Lacquered and wood panelled walls

LED ceiling lighting

Air-conditioning system with remote control and thermostat

40 inch TV

Safe

3 220V sockets

2 USB sockets

### MASTER'S CABIN BATHROOM

Toilet

Bidet Side cabinet

Lacquered cupboard with shelves

Laminate flooring Lacquered ceiling panels

LED ceiling lighting

Separate WC and washroom areas with glass door

2 sinks with mixer taps on ceramic worktop

2 vanity units under the sinks

Standard washroom accessories

Mirror on wall above sinks

Lacquered ceiling panels

LED ceiling lighting

Extractor

2x 220V sockets

### ENGINE COMPARTMENT

Dibond aluminium composite coating of bulkheads 2 MAN engines with exhaust system

Fuel filter-separator for engines and generators

Exhaust system for generators with gas/water separator

Main electrical panel

Bilge pump

Fuel transfer pump 2 desalters

Manual bilge pump

Manual fuel pump

Centralised water pumping system

Main engine cooling system inlet valve

Submersible bilge pump

### GARAGE

Waterproof side door with electro-hydraulic actuator for moving and lowering

Protective coating for walls and ceiling

Submersible bilge pump

Cold fresh water tap for washing the tender

Ceiling LED lighting

Aluminium floor with non-slip coating

220V socket

### GUEST BATHROOMS

Toilet

Shower cubicle separated by a glass door

Sink with mixer tap on ceramic worktop MAIN HELM

2x fabric-covered captain's chairs with lacquered base

Varnished control post 2 red navigation lights

Alarm panel

Sliding curtains for panoramic windows

Air conditioner with remote control and thermostat

Ceiling LED lighting

Ceiling blinds with electric drive

Aluminium glass door on port side

Parquet

220V sockets

USB socket

### CONTROL POST

Carbon fibre steering wheel with a diameter of 900 mm.

Hydraulic steering system with servo drive

Electric motor and gear knobs on the dashboard

2 12-inch multifunction monitors

Joystick and control handles with LED indicators

Helm position sensor on Garmin monitor

Autopilot monitor





## STANDARD EQUIPMENT

Compass Monitor  
GPS  
Radar 48 NM  
Echo sounder with temperature sensor  
High frequency radio  
Windscreen wipers  
220-24V service panel with visual and audible alarms  
Alarms: fire, overload, navigation lights, exhaust  
overheating, low battery, bilge pumps  
Grey and black water tank overflow alarms  
Bow thruster control

### GALLEY

Wall cupboard with shelves and lacquered doors  
Decorative LED strip under wall cupboards  
Laminated walls  
Ceramic worktop  
Induction hob  
Extractor  
Multifunction microwave oven  
Dishwasher  
Sink with mixer tap  
Refrigerator 373 l. and freezer 200 l.  
Air conditioner with remote control and thermostat  
Opening fibreglass hatch on the ceiling  
LED ceiling lighting  
Setback sensor  
Vinyl floor covering  
2x 220V sockets and 1x Schuko socket

### CREW CABIN

Ladder for access from the deckhouse  
2 single beds with mattresses, pillows and bed linen  
Wall-mounted reading lights  
Wardrobe with coat rack  
Curtains on porthole  
Ceiling LED lighting

Ceiling panels with fabric finish  
Laminated walls Carpeting on the floor  
Air conditioner with remote control and thermostat  
Washing-drying machine  
2x 220V sockets

### CREW CABIN BATHROOM

Toilet  
Sink with shower mixer  
Standard washroom set  
Laminated walls  
Laminated ceiling panels  
Access to forward technical room through hatch in front wall  
Weatherproof 220V socket outlet

### RESCUE EQUIPMENT

2 life rafts for 8 persons each  
16 life jackets  
Life buoy  
Sufficient number of portable fire extinguishers  
Certified first aid kit  
Rescue light flares  
Fire-fighting equipment  
Floating rope  
Operating Instructions

### ANCHOR AND MOORING EQUIPMENT

80 kg trefoil anchor with 100 m long and 12 mm diameter  
chain  
2 mooring ropes of 13 mm diameter with chain 10 cylindrical  
shaped taps  
2 buoys

### ANCHOR LOCKER

Chain cleaning system Painting with white gelcoat

### BOW LOCKERS

Main deck access hatches

Side ladders  
Drainage holes at lower points

### MOTORS

2 x Volvo IPS 1.350  
Volvo Dynamic Positioning System IPS 1.050 Volvo  
Dynamic Positioning System IPS 1.350

### LAYOUT

Enclosed deckhouse  
Aft deck has folding glass panels for enclosed patio (including  
air-conditioning system)  
Fully retractable glass doors on both sides at the stern  
Day guest bathroom in saloon  
Additional crew cabin with bathroom and technical room

### TENDER AND WATER TOYS

2 mooring cleats on the swim platform for mooring the tender  
and toys

### STABILISATION SYSTEM

Electric fin stabilisers Interceptor system Mod.1050

### TECHNICAL SYSTEMS

Second control post with joystick for mooring Second  
generator 28 kW  
Air compressor with outlet in the garage compartment Idromar  
180 l/h desalter  
Black water recycling system

### ELECTRONICS AND NAVIGATION

PEPLINK Router No. 01 5G/WI-FI LTE Antenna No. 01  
Wi-Fi Antenna #01 Access Points #03  
Ethernet Switch No. 01 8 X PoE  
Two 16-inch multifunction monitors  
Two 16-inch multifunction monitors and an additional 16-inch  
monitor





## STANDARD EQUIPMENT

Searchlight controlled from deckhouse  
Dimming of exterior lights (aft, bow)  
Dimming of interior lights (salon and all cabins)  
AIS - automatic positioning system

Video camera at the stern with image output to radar monitor

Video camera in the engine room with image output to radar monitor

FLIR pan&tilt thermal night vision camera FLIR pan&tilt thermal night vision camera + low light

### HULL AND DECK

Underwater lighting fixtures

Stainless steel crane hooks with leather trim

The aft deck has a Bimini awning with carbon fibre poles.

Stainless steel lettering of the yacht's name

### FLYBRIDGE

Sunshade on carbon fibre poles

Meridiani furniture

Teak flooring

Velcro on upper deck cushions

### MAIN DECK

12 additional cushions in the dining area

Dining table with height adjustment in the saloon

Teak flooring in the saloon

Hydraulic platform-transformer with a lifting capacity of 600kg

Floor shower on the bathing platform

Sliding dining table for 10 guests

Sunshade on carbon fibre poles

### LOWER DECK

Marble flooring in the bathroom of the forward guest cabins

Marble flooring in guest cabins bathroom Single beds in guest cabins

Safe (extra)

### AUDIO / VIDEO

Sonos Hi-Fi system

Sonos Hi-Fi system with amplifier and subwoofer

Satellite dish KVH Tracvision TV8

Empty antenna dome for symmetry

50' TV with raise/lower mechanism on the stern

55' TV with flybridge raise/lower mechanism

50' TV in owner's cabin 50' TV

in forward guest cabin 22' TV in guest cabins

### HOUSEHOLD APPLIANCES

Wine cellar for 45 bottles and ice maker

Wine fridge for 34 bottles (built into the salon furniture)

Additional 42 litre fridge in the salon or aft Ice maker aft

Miele washing machine/dryer







ARCADIA  
YACHTS



**PETREL GLOBAL SHIPS  
& BOATS TRADING LLC**

Office 621, 6th Floor Block A, Business Village.  
Port-Saeed Deira, Dubai UAE  
[www.petrel-global.com](http://www.petrel-global.com), tel.: +971 52 821 6411

SHERPA 80XL

31





**PETREL GLOBAL SHIPS  
& BOATS TRADING LLC**

Office 621, 6th Floor Block A, Business Village.  
Port-Saeed Deira, Dubai UAE  
[www.petrel-global.com](http://www.petrel-global.com), tel.: +971 52 821 6411