



**PETREL GLOBAL SHIPS
& BOATS TRADING LLC**

Office 621, 6th Floor Block A, Business Village.
Port-Saeed Deira, Dubai UAE
www.petrel-global.com, tel.: +971 52 821 6411

Riva 66' Ribelle





"A journey with my Ribelle"
Balearic Islands, Spain







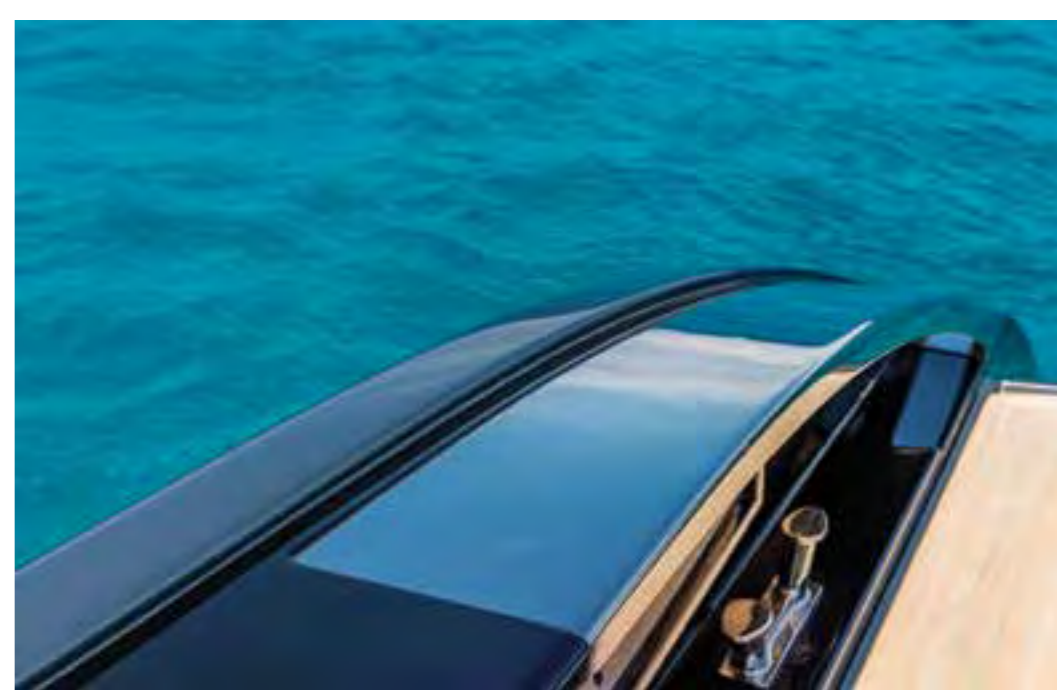


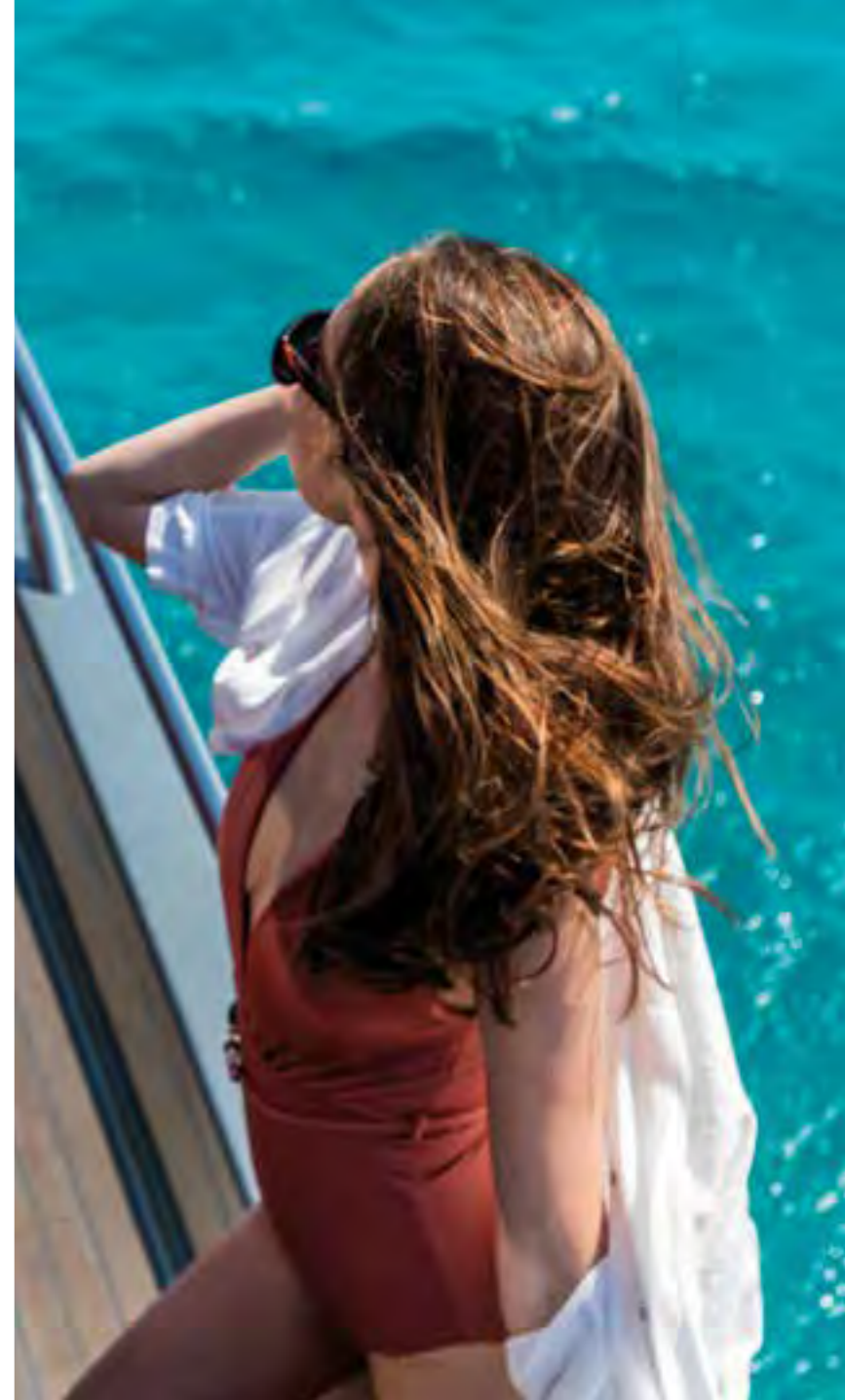


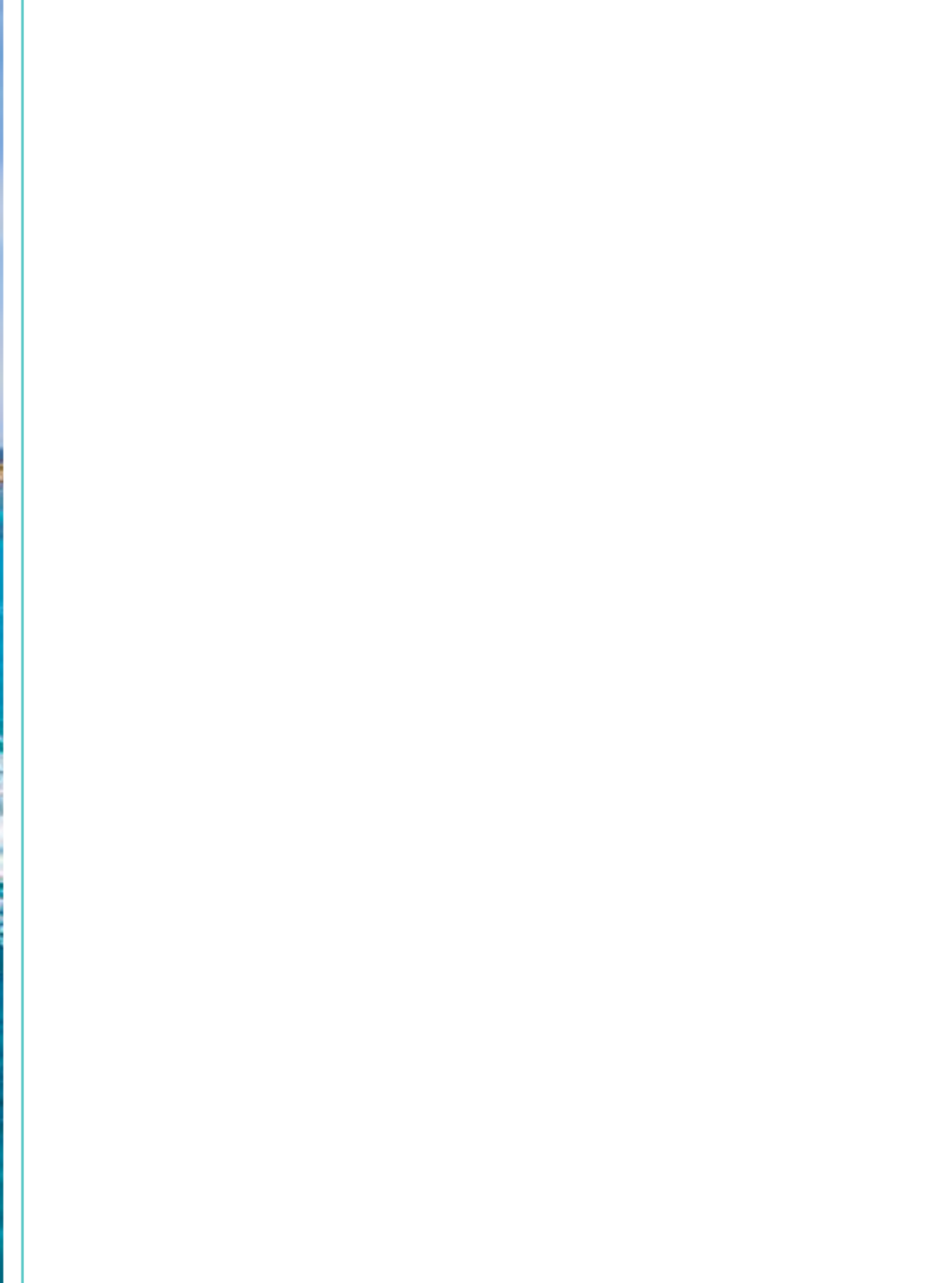




















































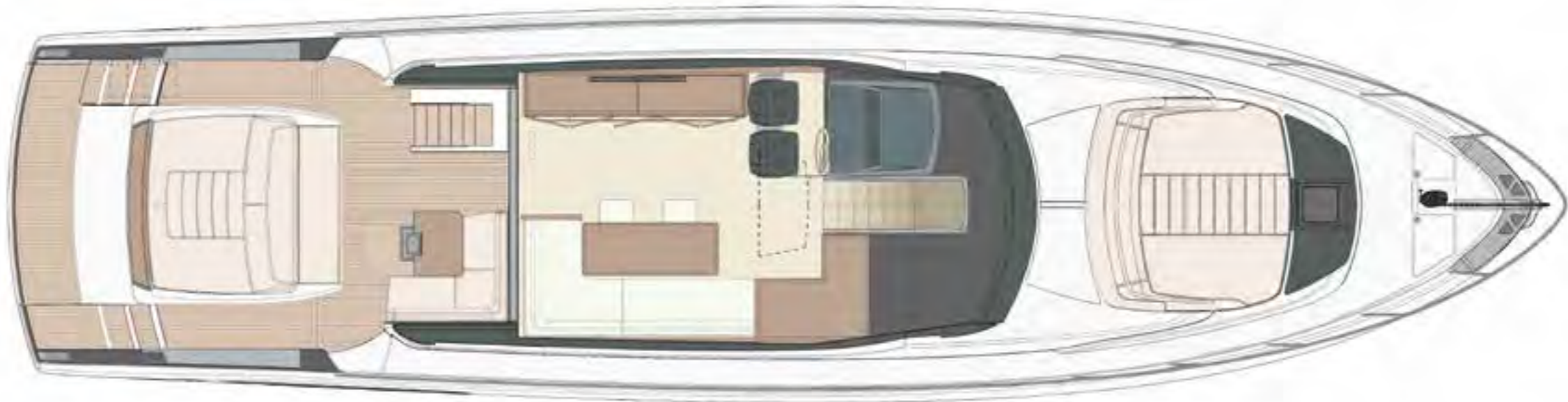








Profile



Main deck



Lower deck

TECHNICAL SHEET

Preliminary

Engines	2 x MAN V 12V 1550 - power 1550mhp / 1140kW at 2300 rpm	MAN 1550
Speed	Maximum speed	37 knots
	Cruising speed	33 knots
Range	Maximum speed	235 n.m.
	Cruising speed	250 n.m.
Main sizes	Loa = overall length (standard ISO 8666)	20,67 m. - 67 ft. 10 in.
	Lh = Hull length (standard ISO 8666)	20,06 m. - 65 ft. 10 in.
	Lwl = waterline length (boat fully laden)	16,98 m. - 55 ft. 9 in.
	Maximum beam	5,29 m. - 17 ft. 4 in.
	Depth under propellers (boat fully laden)	1,80 m. - 5 ft. 11 in.
	Displacement unladen	39,50 t. - 87083 lbs.
	Displacement laden	46,50 t. - 102515 lbs.
	Maximum number of persons on board	12
	Design category Directive 2013/53/EU	A
Certification modules	B + F + Aa (sound emission) RINA S.p.A.	
Technical data	Hull type: warped hull with spray rails and aft deadrise	14,5°
	H = Overall height from keel to rollbar	6,74 m. - 22 ft. 1 in.
	Ht = Minimum transport height from keel	5,55 m. - 18 ft. 3 in.
	P1 = pulpit bow rail	0,48 m. - 1 ft. 7 in.
	P2 = transom	0,13 m. - 0 ft. 5 in.
	Fuel tanks capacity	3800 lt. - 1004 US gals.
	Water tanks capacity	710 lt. - 188 US gals.
Performance specifications	the performance is estimated at the following conditions: standard version displacement of the yacht: at 1/3 liquid load, clean hull, 25°C air temperature good weather conditions, 4 persons on board	41,20 t. - 90832 lbs
	overloading the yacht by:	1 t. - 2205 lbs.
	top speed decreases of:	1 knot



**PETREL GLOBAL SHIPS
& BOATS TRADING LLC**

Office 621, 6th Floor Block A, Business Village,
Port-Saeed Deira, Dubai UAE
www.petrel-global.com., tel.: +971 52 821 6411