

# Custom Line 140'



**PETREL GLOBAL SHIPS  
& BOATS TRADING LLC**

Office 621, 6th Floor Block A, Business Village.  
Port-Saeed Deira, Dubai UAE  
[www.petrel-global.com](http://www.petrel-global.com), tel.: +971 52 821 6411

See another sea with  
the **Custom Line 140'**.  
A reflection of the  
owner's personality,  
she's more than a yacht;  
she's a unique masterpiece.  
Because cruising is an art.  
The art of being different.



we see  
limitless inspiration.





The exquisite new work of art by our Atelier: the **Custom Line 140'** is the sublime **flagship of our fleet**, a masterpiece of design, technology and absolute comfort.





3 decks, 42.6 metres long,  
8.6 metres in the beam,  
a 21.5-knot top speed,  
immeasurable pleasure.



The naval design inspired by residential architecture leads you in a place to live, **your own private land, your biggest planning yacht** ever built by Custom Line.









Sleek, powerful contours express the project's profoundly **sporty aesthetic**.



Hybrid materials and novel lightweighting technology enable **top performance** with the new high-speed displacement hull.



## Speed

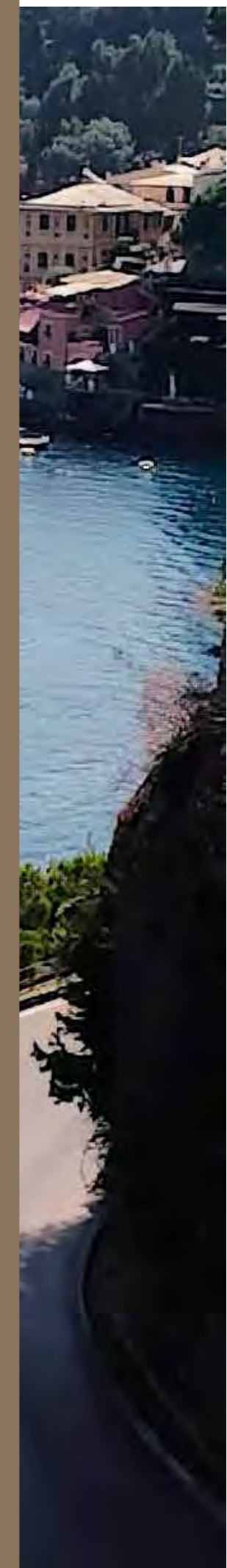
**21,5** knots

maximum speed

**18** knots

cruising speed

An array of navigation systems to free your mind and let your spirit soar on the high seas.



The aft area is all about **the sea-level beach club**, where guests can enjoy all the fun and relaxation of a beach house.





The horizon beckons from the large sun deck, **a panoramic 70-sqm wellness space** to enjoy with family and friends or in total privacy.









Generous spaces for on-board wellbeing and contemporary living: **316 sqm inside and 220 sqm outside.**





In the sky lounge on the upper deck, roomy indoor spaces create a **feeling of home**, while the fore-to-aft glazing lets you contemplate nature from inside and savour **breathtaking vistas**.





Outdoor  
and indoor  
interior design

262<sub>sqm</sub>

Living area

47<sub>sqm</sub>

Spacious Owner's suite

4

VIP / guest cabins

World-class craftsmanship  
and tailor-made service  
bring your dreams to life for a  
truly bespoke experience.





The spacious **48-sqm main-deck saloon** is a luxurious place of relaxation, conversation and contemplation; peerless design pieces combine to create **a unique style of living.**

we see  
a beautiful  
sculpture.

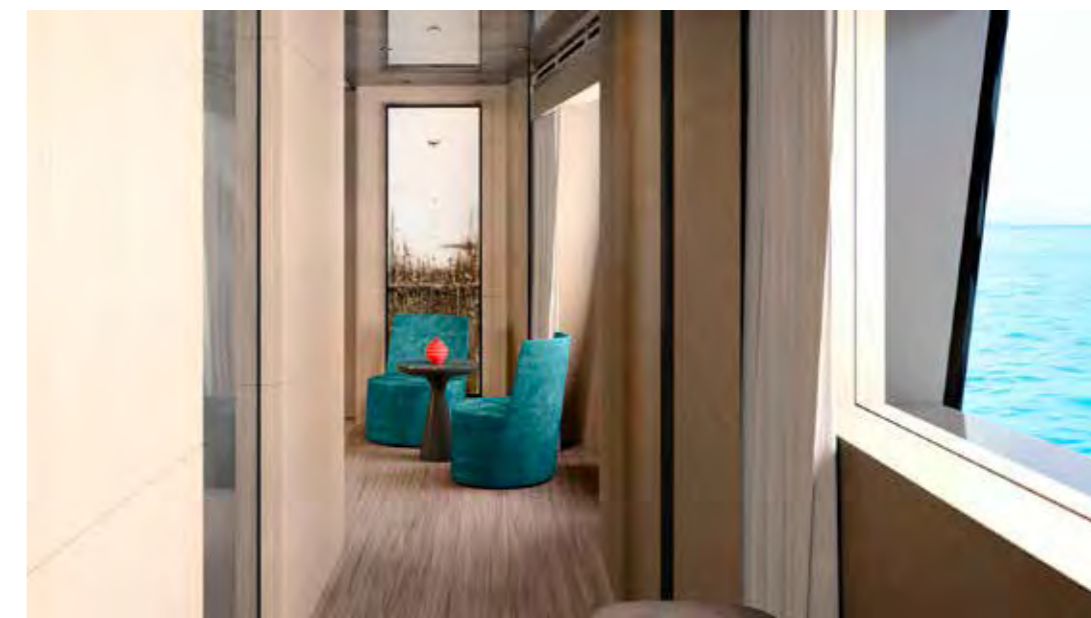




Past and future cruise together aboard the Custom Line 140', where every detail exudes the glorious **Italian nautical tradition**, with all its originality and vision.



The **owner's cabin is a palatial 32-sqm wide-body space** to live and love throughout the journey: your bespoke personal residence on the water.







Let your guests experience the quintessential art of living the sea; the **3 VIP cabins** and **1 guest cabin** offer 60 sqm of cruising comfort in the utmost privacy.





The interiors and exteriors are designed to the **highest standards** with impeccable **attention to detail**, as befits the brand's tailor-made approach and the supreme expertise of the **Custom Line Atelier**.

# Custom Line 140' Project

## Technical data Preliminary



### MOTORIZZAZIONE

2 x MTU 16V 2000 M96L power 2638 mhp / 1939 kW at 2450 rpm

### SPEED (KNOTS) (ref. Performance Specifications)

	MTU 2638
Maximum speed	21,5
Cruising speed	18

### RANGE (NAUTICAL MILES) (ref. Performance Specifications)

	MTU 2638
Maximum recorded speed	600
Cruising speed	700
Economic cruising speed (11 knots)	2000

### MAIN SIZES

Loa = overall length (standard ISO 8666)	42,15	m/ft. in.	<b>138' 3"</b>
Lh = Hull length (standard ISO 8666)	42,15	m/ft. in.	<b>138' 3"</b>
Lwl = waterline length (boat fully laden)	36,16	m/ft. in.	<b>118' 8"</b>
Maximum beam	8,57	m/ft. in.	<b>28' 1"</b>
Depth under propellers (boat fully laden)	2,31	m/ft. in.	<b>7' 7"</b>
Displacement unladen	210	ton./lb	<b>462971</b>
Displacement laden	250	ton./lb	<b>551156</b>
Gross Tonnage	399	GT	
Maximum number of persons on board	22		

Certification modules

RINA S.p.A. \* HULL, • MACH, Y, Unrestricted Navigation

### TECHNICAL DATA

Hull type: warped hull with spray rails and aft deadrise	8,5	°	
H = Overall height from keel to roll bar	11,50	m/ft. in.	<b>37' 9"</b>
Appendages	0,00	m/ft. in.	<b>0' 0"</b>
Fuel tank capacity	30000	lt./US gals.	<b>7925</b>
Water tanks capacity	4000	lt./US gals.	<b>1057</b>

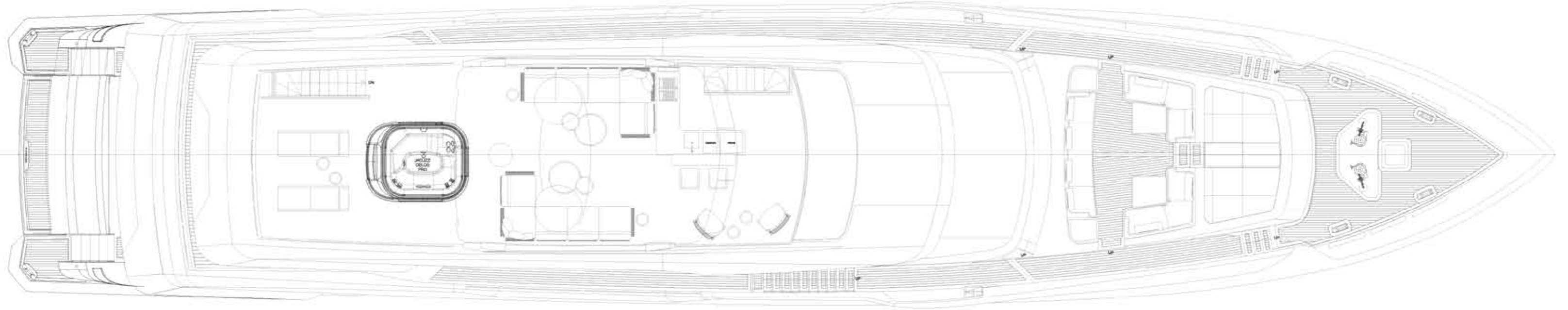
### PERFORMANCE SPECIFICATIONS

the performance is estimated at the following conditions: standard version displacement of the yacht at half liquid load, clean hull, 25°C air temperature good weather conditions, 4 persons on board	225	ton./lb	496040
overloading the yacht by: top speed decreases of: Range will decrease accordingly	8	ton./lb	17637
	1	nodo	
In the Opt Version with MTU 20V 3246 mhp displacement will increase by	5	ton./lb	11023

Engineering design: Ferretti Group  
Exterior design: Francesco Paszkowski Design  
Interior architecture: Francesco Paszkowski Design  
Interior Design: Custom Line Atelier

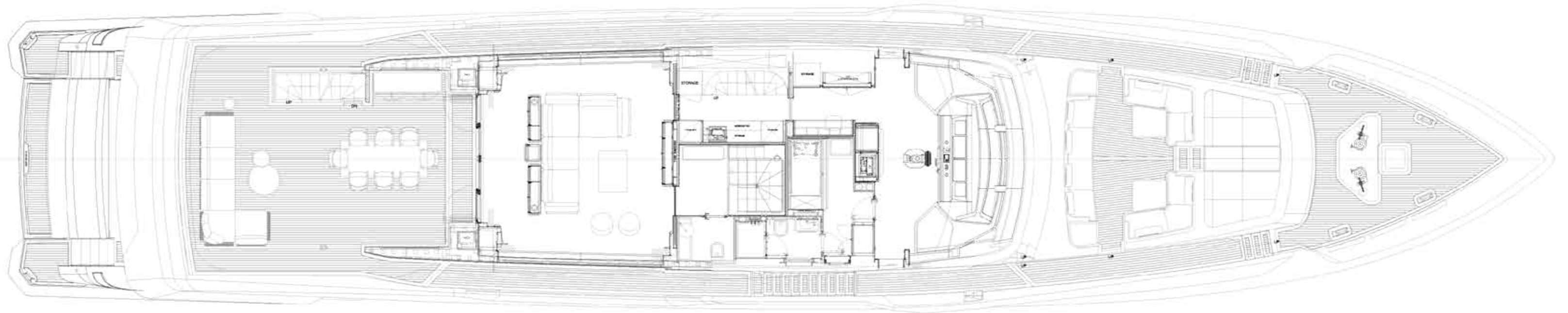
## Sun deck

---



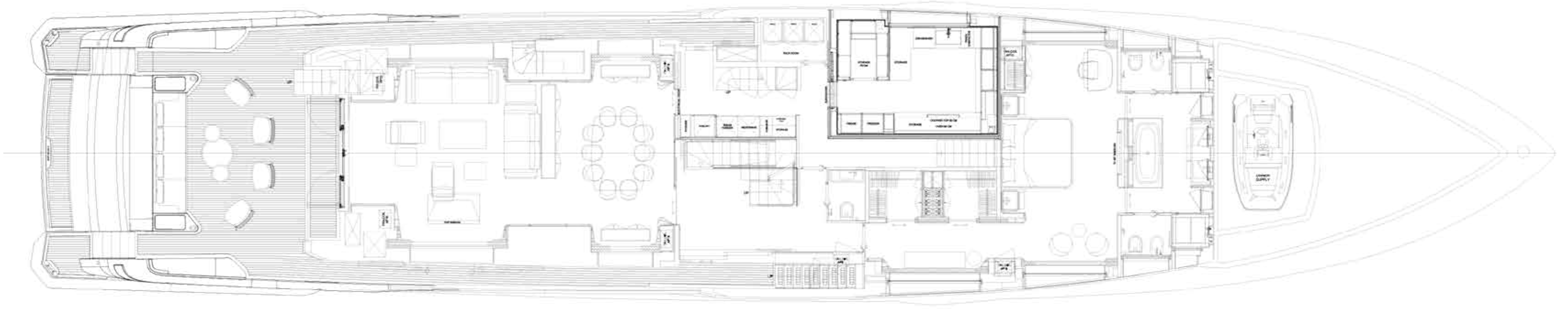
## Upper deck

---



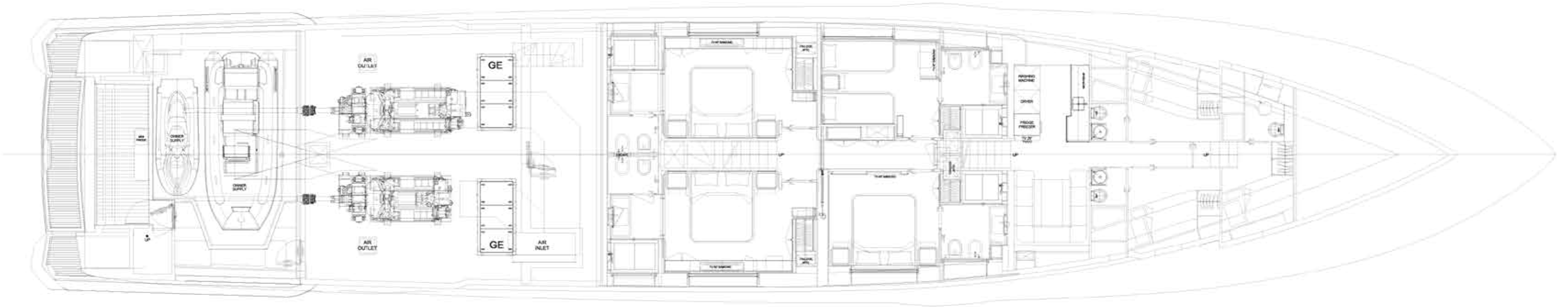
## Main deck

---



## Lower deck

---





## *Leading the Future*

### *Creating Greatness*

This is our commitment as a luxury yachting group. This is the spirit that drives us, individually and collectively. This is the value we bring for our employees, our brands, our clients and society as a whole.

### *Striving for Innovation*

Ferretti Group delivers excellence through constant innovation and pioneering technology. This is how we achieve formidable performance and safety at sea, offering clients authentic experiences to satisfy their desires for affirmation and self-expression.

### *Going Global*

Ferretti Group always endeavours to be close to the market and to our customers, doing whatever it takes to deliver exceptional performance. We have built up an agile, resourceful international dealer network, supported by high-end marketing initiatives to enhance our brands' worldwide visibility and profile.

### *Empowering Expertise*

We continually spur each of our brands to go further. We leverage their special know-how, artisanal accomplishment and technological expertise to stay at the cutting edge of the nautical world.

### *Creating Value*

We focus our energy and resources on supporting our brands in their long-term development, further boosting their ability to create value. This has earned us extraordinary success over the years, helping the group become a pre-eminent player in today's yachting sector.

### *Softening our impact on the environment*

Ever aware of the need to consider the environmental and social side-effects of our products and processes, Ferretti Group publishes a Sustainability Report every year. This document maps the main impacts of our activities and outlines the initiatives in place towards more sustainable development.



PERSHING

itama

Riva

CRN

CUSTOM LINE



**PETREL GLOBAL SHIPS  
& BOATS TRADING LLC**

Office 621, 6th Floor Block A, Business Village.  
Port-Saeed Deira, Dubai UAE  
[www.petrel-global.com](http://www.petrel-global.com), tel.: +971 52 821 6411