

MANGUSTA 165 REV





MANGUSTA
Out of ordinary



PETREL GLOBAL

Business Village-Block B 3d Floor, office 309-310, 221 Al Maktoum Rd, Dubai, UAE.
www.petrel-global.com
tel.: +971 52 821 6411

165 REV

LOBANOV

FOR **MANGUSTA 165 REV**

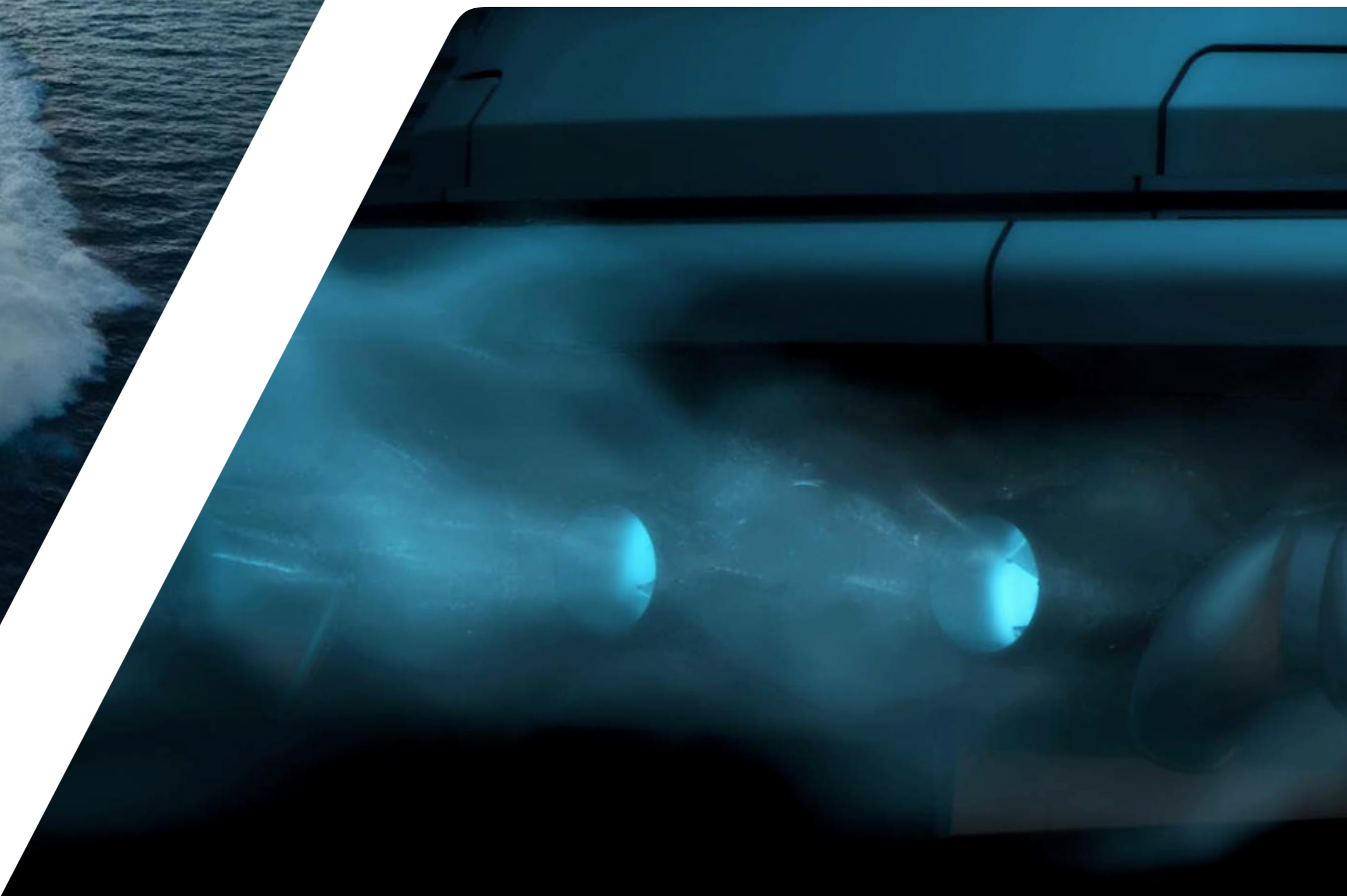
*Sometimes, the inspiration that drives a groundbreaking project comes from the past.
I was fascinated by the bold yet refined lines of sports cars from the 1930s which inspired me to redesign the timeless and iconic Maxi Open Mangusta 165. An absolute masterpiece that today takes on a new shape while holding true to the Mangusta DNA.
Like a classic artwork of timeless beauty, today, the 165 becomes the ultimate revolutionary icon.
LOBANOV*

LOBANOV DESIGN - The Superyacht Design Studio





REVOLUTIONARY
PERFORMANCE





MANGUSTA
Out of ordinary



PETREL GLOBAL

Business Village-Block B 3d Floor, office 309-310, 221 Al Maktoum Rd, Dubai, UAE.
www.petrel-global.com
tel.: +971 52 821 6411

165 REV



MANGUSTA
Out of ordinary



PETREL GLOBAL

Business Village-Block B 3d Floor, office 309-310, 221 Al Maktoum Rd, Dubai, UAE.
www.petrel-global.com
tel.: +971 52 821 6411

165 REV



MANGUSTA
Out of ordinary



PETREL GLOBAL

Business Village-Block B 3d Floor, office 309-310, 221 Al Maktoum Rd, Dubai, UAE.
www.petrel-global.com
tel.: +971 52 821 6411

165 REV



MANGUSTA
Out of ordinary



PETREL GLOBAL

Business Village-Block B 3d Floor, office 309-310, 221 Al Maktoum Rd, Dubai, UAE.
www.petrel-global.com
tel.: +971 52 821 6411

165 REV









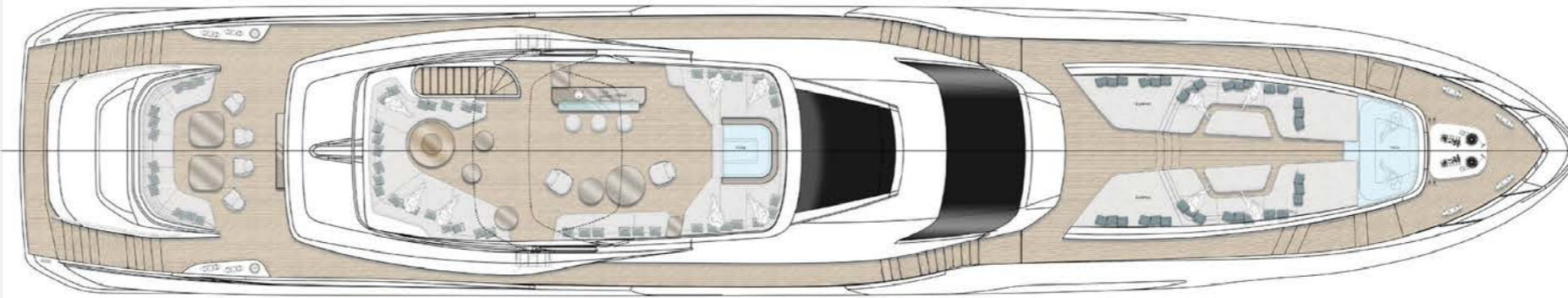




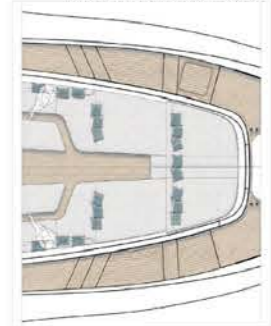


LAYOUT

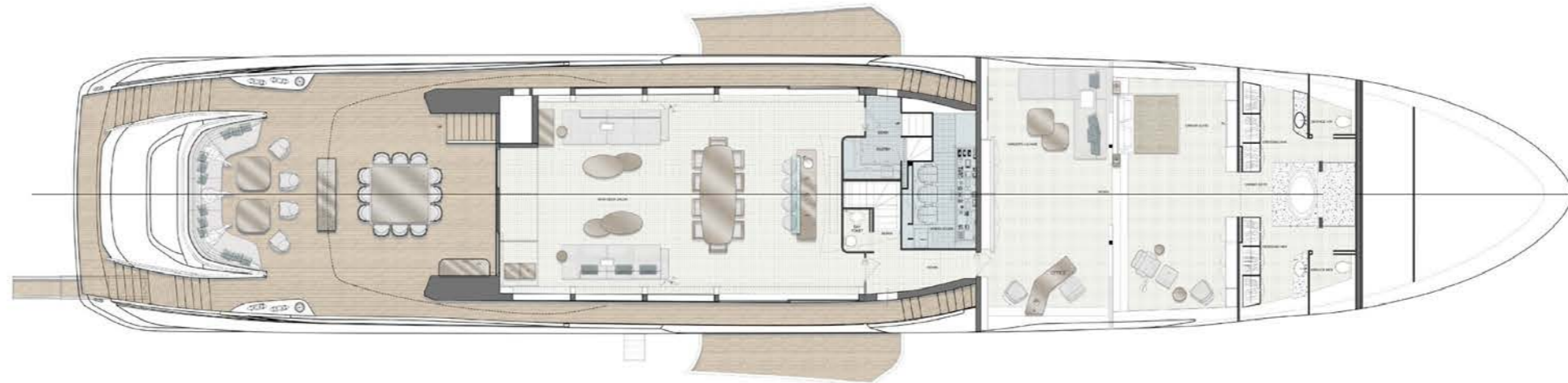
SUN DECK



FORE DECK
Solution with Sun Bed



MAIN DECK



LOWER DECK
Solution with RELAX CABIN
Solution with GYM AREA



LOWER DECK



TECHNICAL SPECIFICATIONS

CONSTRUCTION

HULL	SINGLESKIN COMPOSITE
SUPERSTRUCTURE	SINGLESKIN COMPOSITE

DIMENSIONS

LENGTH OVERALL	49.90 M	163'8"
BEAM	~ 9.2 M	30'2"
MAX DRAFT	~ 2 M	6'6"
DISPLACEMENT AT FULL LOAD	~ 310 T	684,000 LBS
DISPLACEMENT AT HALF LOAD	~ 290 T	640,000 LBS
GROSS TONNAGE	499 GT	

TANK CAPACITY

FUEL CAPACITY	~ 40,000 L	10,500 US GALS
WATER CAPACITY	~ 4,000 L	1,060 US GALS

MANGUSTA 165 REV

PROPULSION

MAIN ENGINES POWER	4 X MTU 16V 2000 M96L 2600 HP @ 2450 RPM (1939 KW)
TRANSMISSION	2 X WATERJETS KAMEWA S4-71 + 2 X WATERJETS KAMEWA B4-71
STABILIZERS	ZERO SPEED AND UNDERWAY

PERFORMANCE

MAX SPEED HALF LOAD	~ 34 KNOTS
CRUISING SPEED HALF LOAD	~ 30 KNOTS
RANGE AT CRUISING SPEED	~ 650 NAUTICAL MILES

ACCOMMODATION

GUESTS	12 IN 6 CABINS
CREW	10 IN 5 CABINS

DESIGNERS

EXTERIORS	LOBANOV DESIGN / OVERMARINE GROUP
INTERIORS	M ² ATELIER / OVERMARINE GROUP









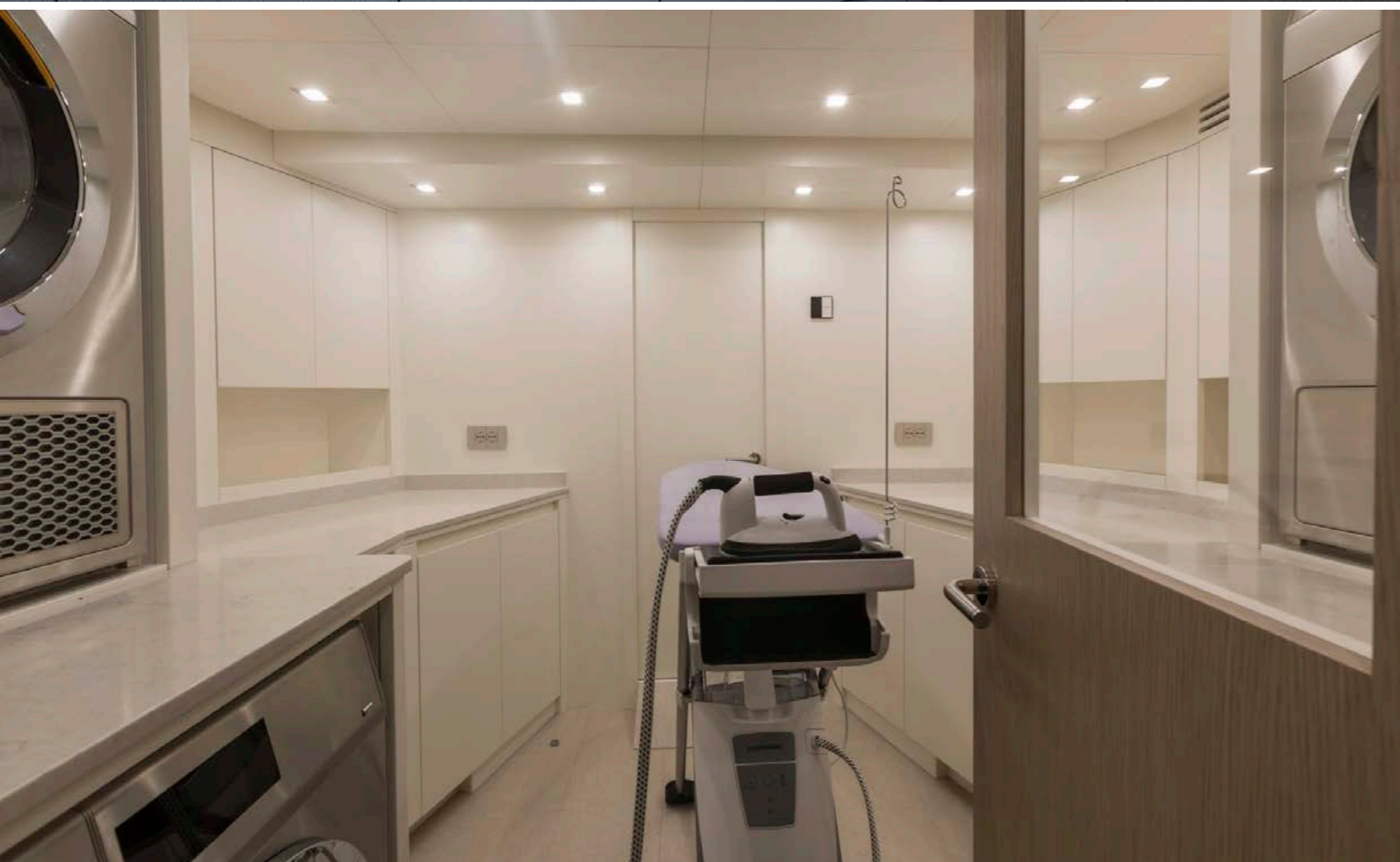
















MANGUSTA 165 REV