

Custom Line Navetta 37



See another sea with
Custom Line **Navetta 37**.

A reflection of the owner's personality,
she's more than a yacht;
she's a unique masterpiece.

Because cruising is an art.

The art of being different.

The art of movement.



We see
a vision of beauty.



Dimensions

37,04

overall length

8

metres

maximum beam

4

decks

Custom Line Navetta 37.

A triumph of design,
with her sinuous,
sophisticated lines.





Leave your mark
on the endless canvas
of the sea.





Cruising and travel,
made art with
your Custom Line Navetta 37.



we see
an amazing picture.



Where **cruising** and **dreaming** become one.
One Line.







Feel the endless
joy of cruising.



Facts & Figures

2

MAN V12 1400 CR engines, developing

1400 Mhp

15,5 knots

maximum speed

12 knots

cruising speed

Savour our vision
of dynamism and style.



Experience a unique sensation.
Experience a **unique creation.**





we see an incredible painting.



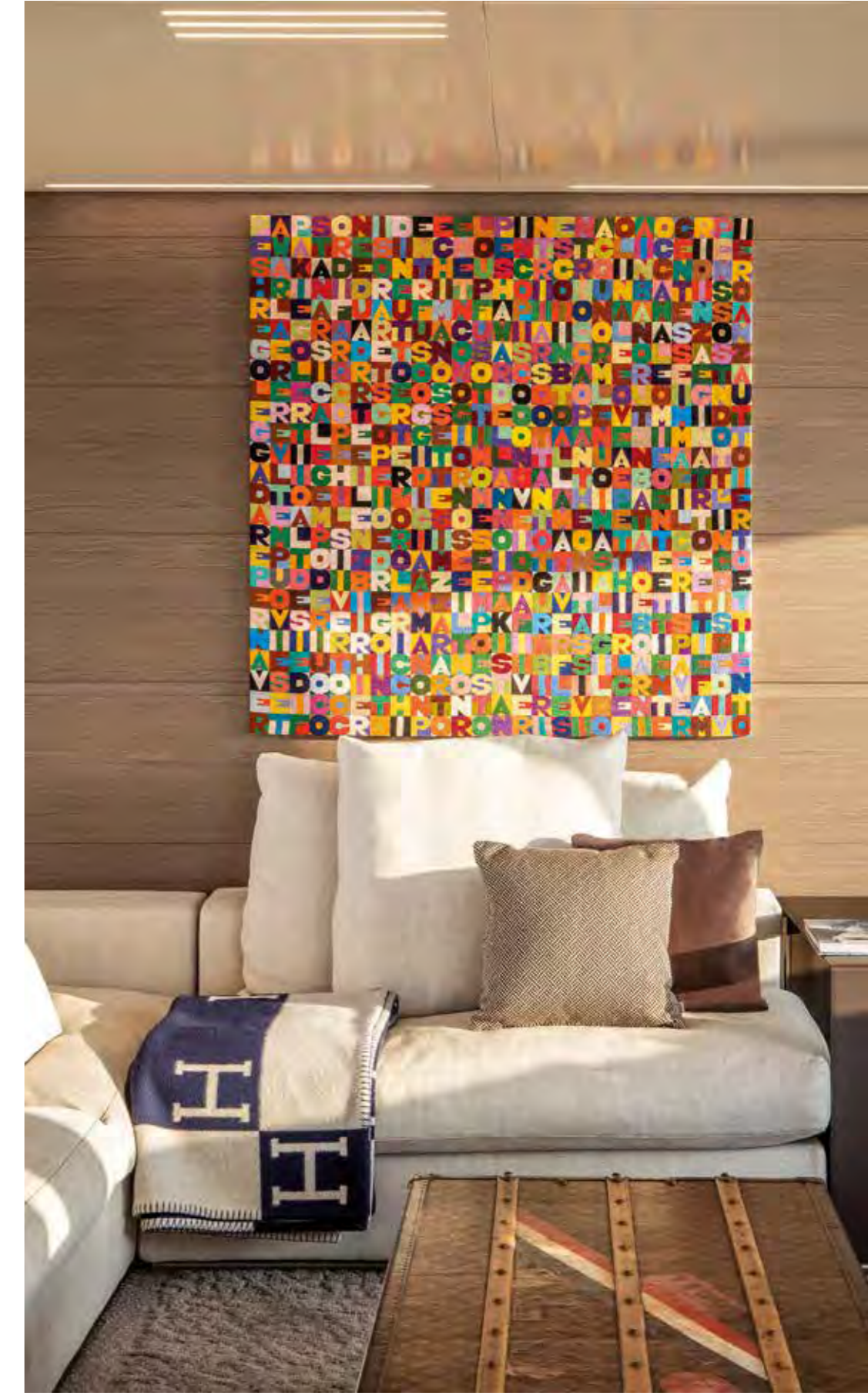


A place to give free rein
to your **imagination.**











Beyond the bounds
of the horizon.



Amazing
panoramic views

360°

Panorama

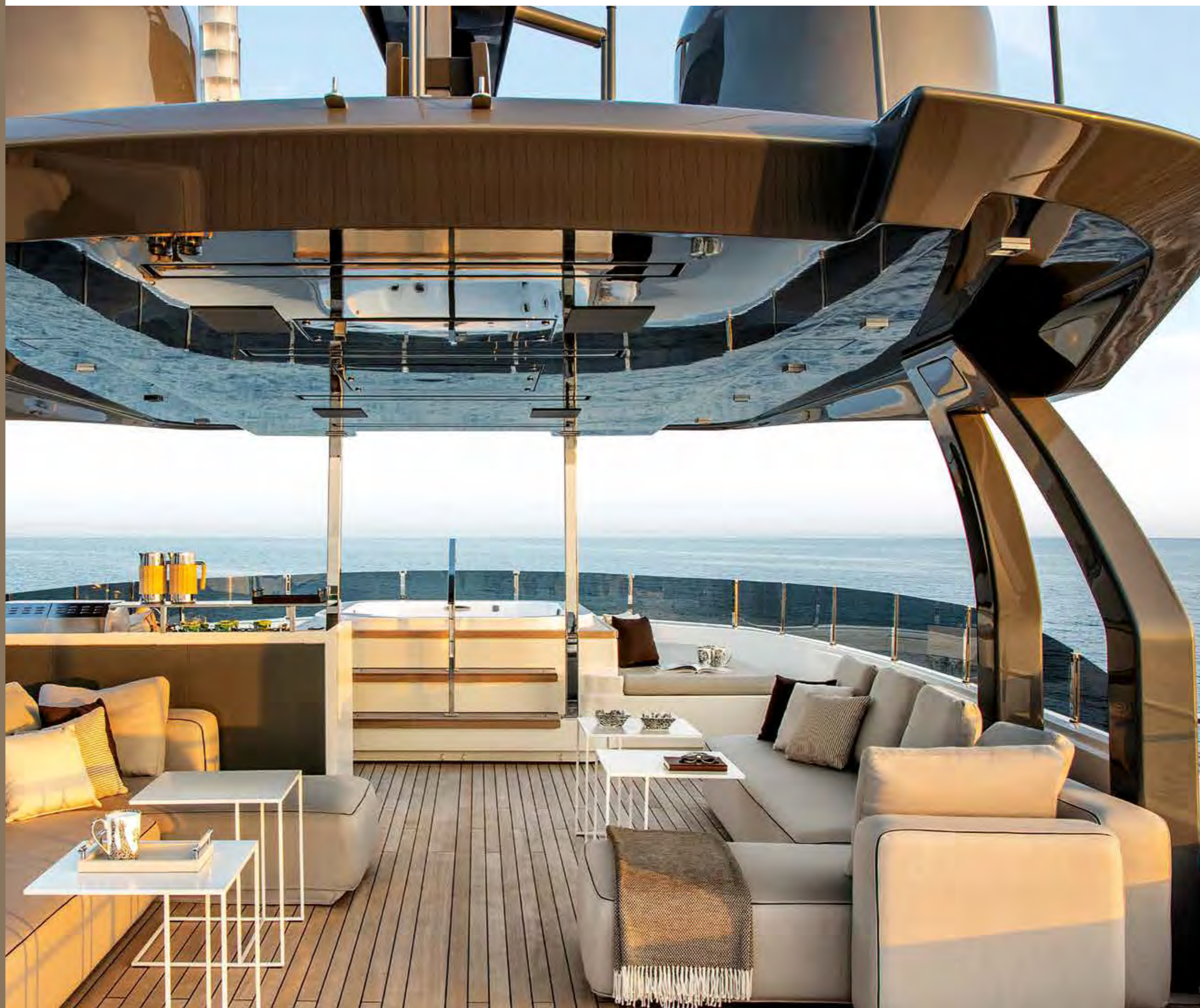
1

majestic sliding window in the dining room

58_{sqm}

sundeck with hard top

Admire your own
private vista, every day.





Where the sun never sets.





Your own **private world**
to savour and share.







Enjoy the art
of seeing beyond.





Key features

Luminous full-height

110 sqm

windows

Generous

476 sqm

on-board spaces, inside and out

Superb features
for a magnificent
cruising experience.



37 shades of innovation.



we see
a work of art.



Grand layouts:

41 sqm

main salon

31 sqm

owner's suite

1

fully equipped beach club
with the ocean all around

Feel the pleasure
of customizing your journey.





Timeless style
for a timeless journey.





Spaces inspired by you.

Every facet of the gem
reflects you.





A marvel of cruising comfort to revel in the infinity of the sea.



Technical data

ENGINES

2 x MAN V12 LE446 - 1400 CR power 1400 mhp / 1029 kW at 2300 rpm
 2 x CAT ACERT C32 V12 - power 1622 mhp / 1193 kW at 2300 rpm

RATING (YEAR MAX H)

std 3000h
 opt 3000h

SPEED (KNOTS) (ref. Performance Specifications) (*)

	MAN 1400	CAT 1622
Maximum speed	15,5	16,5
Cruising speed (max continuous speed)	12	12

RANGE (NAUTICAL MILES) (ref. Performance Specifications) (*)

	MAN 1400	CAT 1622
Maximum speed	1010	870
Cruising speed	2000	2000
Economic cruising speed (10 knots)	3000	2650

MAIN SIZES

Loa = Overall length (standard ISO 8666)	37,04	m/ft. in.	121' 6"
Lh = Hull length (standard ISO 8666)	36,89	m/ft. in.	121' 0"
Lwl = Waterline length (boat fully laden)	30,66	m/ft. in.	100' 7"
Maximum beam	8,00	m/ft. in.	26' 3"
Depth under propellers (boat fully laden)	2,27	m/ft. in.	7' 5"
Displacement unladen (*)	185	t/lb	407855
Displacement laden (*)	225	t/lb	496040
Gross Tonnage	298	GT	
Maximum number of persons on board			20

Certification

RINA S.p.A. ✳HULL, • MACH, Y, Unrestricted Navigation

TECHNICAL DATA

Hull type: semidisplacement hull with hard chine and deep keel			
H = Overall height from keel to radar arch	11,80	m/ft. in.	38' 9"
P = swim platform	0,15	m/ft. in.	0' 6"
Fuel tank capacity	32500	lt./US gals.	8586
Water tanks capacity	4000	lt./US gals.	1057
Black water tank capacity	1500	lt./US gals.	396
Grey water tank capacity	1500	lt./US gals.	396

PERFORMANCE SPECIFICATIONS (*)

The performance is estimated at the following conditions: standard version displacement of the yacht: at half liquid load, clean hull, 25° C air temperature, good weather conditions, 8 persons on board	204	t/lb	449201
Overloading the yacht by	4.0	t/lb	8818
top speed decreases of	1	knot	

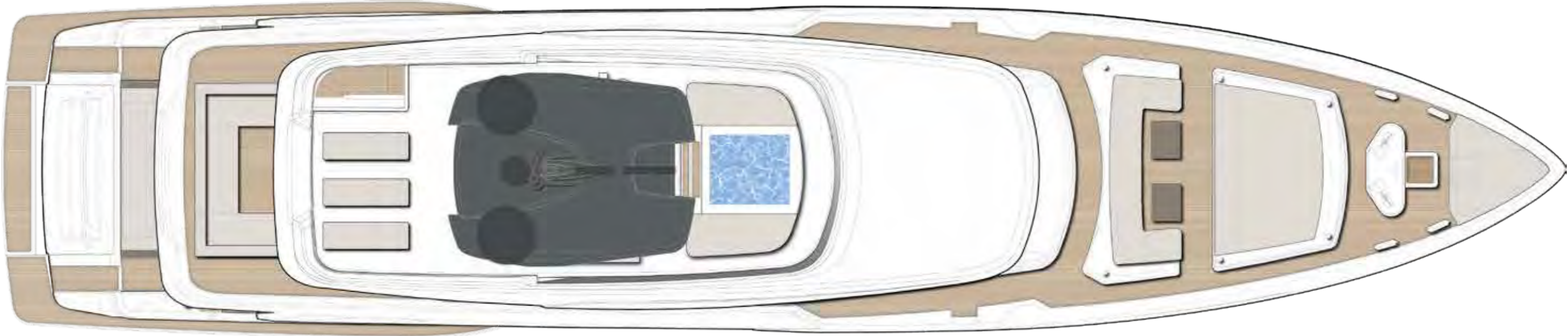
Exterior design: Zuccon International Project

Interior Design: Custom Line Atelier

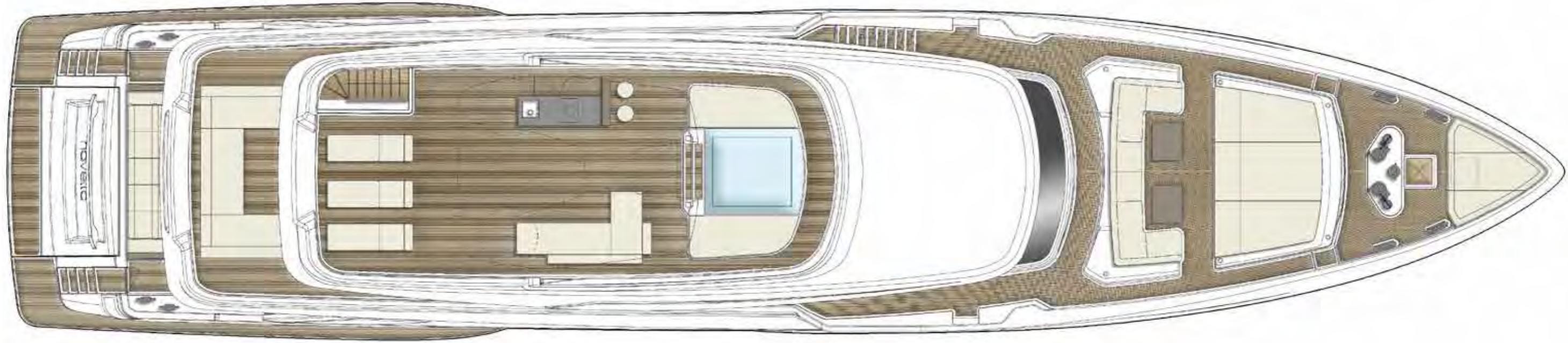
Profile



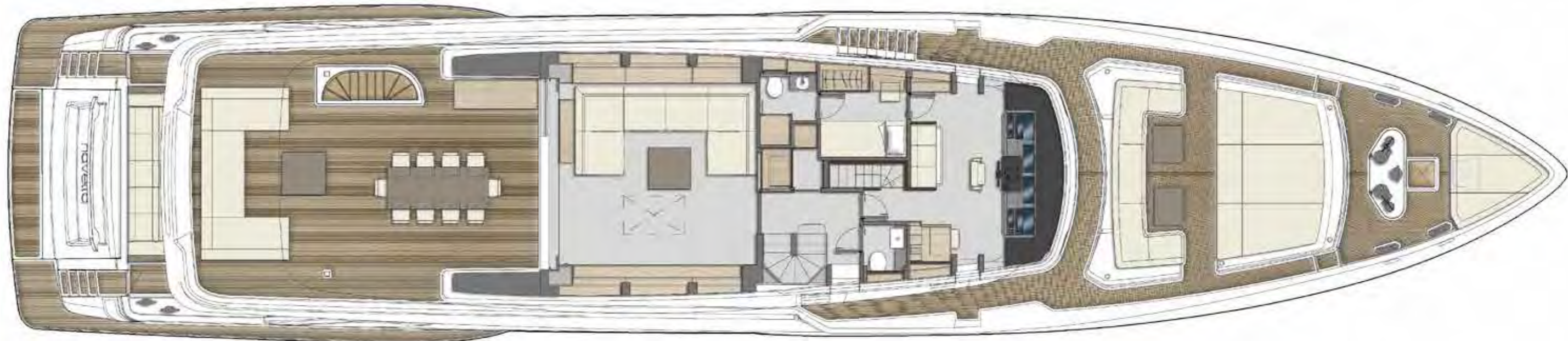
Top view



Sun deck



Upper deck



Main deck



Lower deck





Leading the Future

Creating Greatness

This is our commitment as a luxury yachting group. This is the spirit that drives us, individually and collectively. This is the value we bring for our employees, our brands, our clients and society as a whole.

Striving for Innovation

Ferretti Group delivers excellence through constant innovation and pioneering technology. This is how we achieve formidable performance and safety at sea, offering clients authentic experiences to satisfy their desires for affirmation and self-expression.

Going Global

Ferretti Group always endeavours to be close to the market and to our customers, doing whatever it takes to deliver exceptional performance. We have built up an agile, resourceful international dealer network, supported by high-end marketing initiatives to enhance our brands' worldwide visibility and profile.

Empowering Expertise

We continually spur each of our brands to go further. We leverage their special know-how, artisanal accomplishment and technological expertise to stay at the cutting edge of the nautical world.

Creating Value

We focus our energy and resources on supporting our brands in their long-term development, further boosting their ability to create value. This has earned us extraordinary success over the years, helping the group become a pre-eminent player in today's yachting sector.

Softening our impact on the environment

Ever aware of the need to consider the environmental and social side-effects of our products and processes, Ferretti Group publishes a Sustainability Report every year. This document maps the main impacts of our activities and outlines the initiatives in place towards more sustainable development.



PETREL GLOBAL

Business Village-Block B 3d Floor, office 309-310, 221 Al Maktoum Rd, Dubai, UAE.
www.petrel-global.com., tel.: +971 52 821 6411