

Custom Line Navetta 30



**PETREL GLOBAL SHIPS
& BOATS TRADING LLC**

Office 621, 6th Floor Block A, Business Village,
Port-Saeed Deira, Dubai UAE
www.petrel-global.com., tel.: +971 52 821 6411





Custom Line Navetta 30 transports you to a **new dimension of design.**







A classic and timeless profile where horizontal and vertical lines flow to a unique point.
Harmony.



Dimensions

28,43 meters

overall length

7,31 meters

maximum beam

3 decks

Space tailored
to the owner's identity.





Generous volumes meet **elegance and charm** in a classic style that will forever excite.



Facts & Figures

2050 nm

range at 10 knots

14,5 knots

maximum speed

13 knots

cruising speed

To cruise is to travel
at the rhythm
of your heart's desires.

Conversation, relaxation,
contemplation.
Savour the finest
things under the sun,
in palatial comfort.









Inside and outside
interlink to embrace
the horizon all around.





Amazing
panoramic views

360°

panorama

32_{smq}

Upper deck forward area

Sense the beauty
of the infinite in the horizon.

Lighting design ensures the perfect integration of **architecture** and **light**. Different lighting moods personalise your living experience.



The **perfection**
of a journey lies
in its stops.









The pleasure of cruising every sea while enjoying the flavour of **home**.





Key features

Generous

320

sqm

on-board spaces, inside and out

Luminous full-length

32

sqm

sun deck

1

Panoramic sea-view bar

Just like the sea
becoming an ocean,
the indoors
become outdoors.



we see
concrete art.



Grand layouts

207 smq

living areas

37 smq

Alfresco dining

35 smq

owner's suite

Home is wherever
you find your spaces.
No boundaries
between internal
and external areas.



Where **nautical tradition** meets **contemporary design**,
a revolution starts.





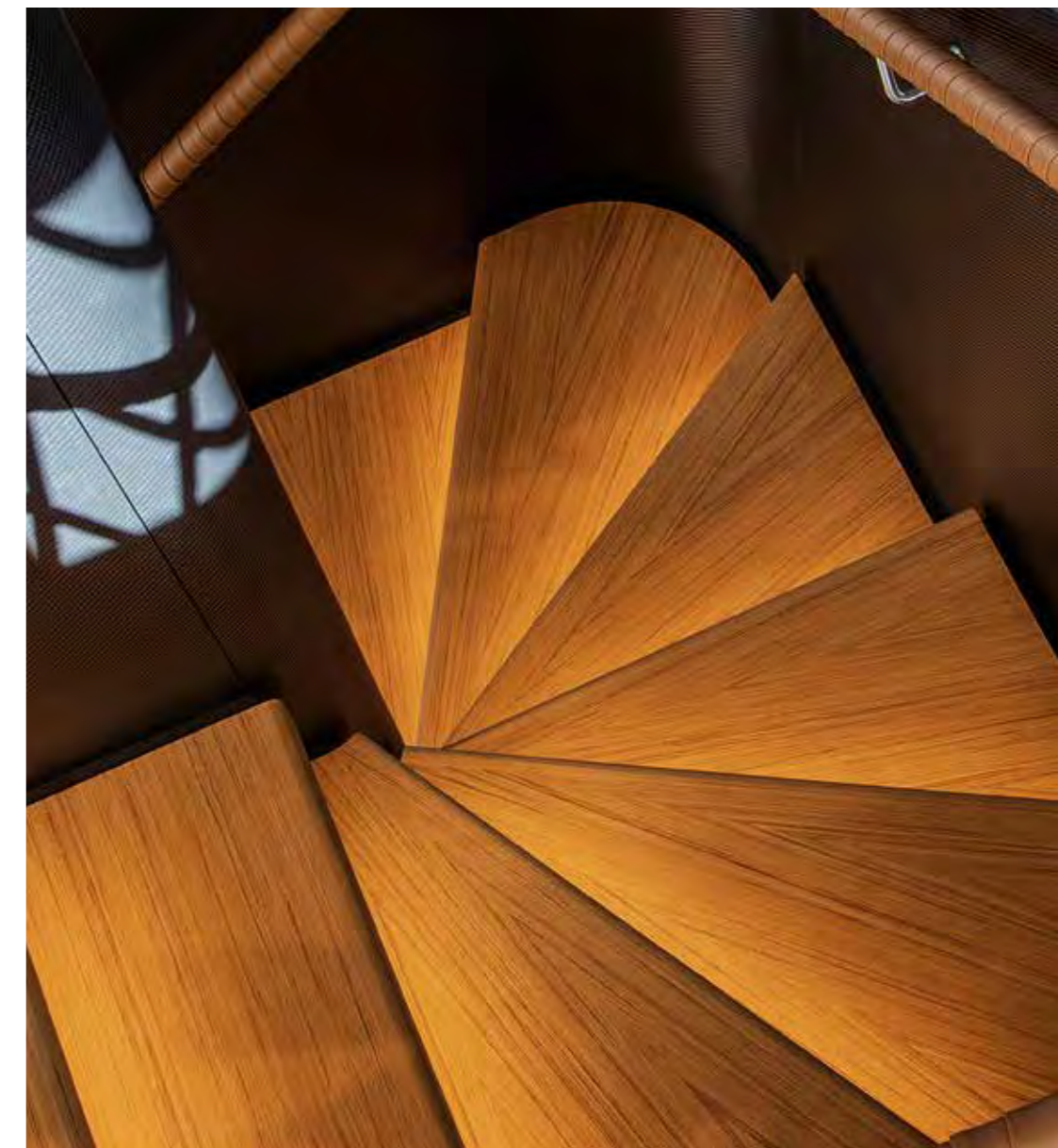








The architectural language combines the maritime tradition to fine handcrafting, encompassing them in a contemporary style statement. A new concept of interiors.









Inspiration comes from
the seafaring tradition,
creation looks to the future.







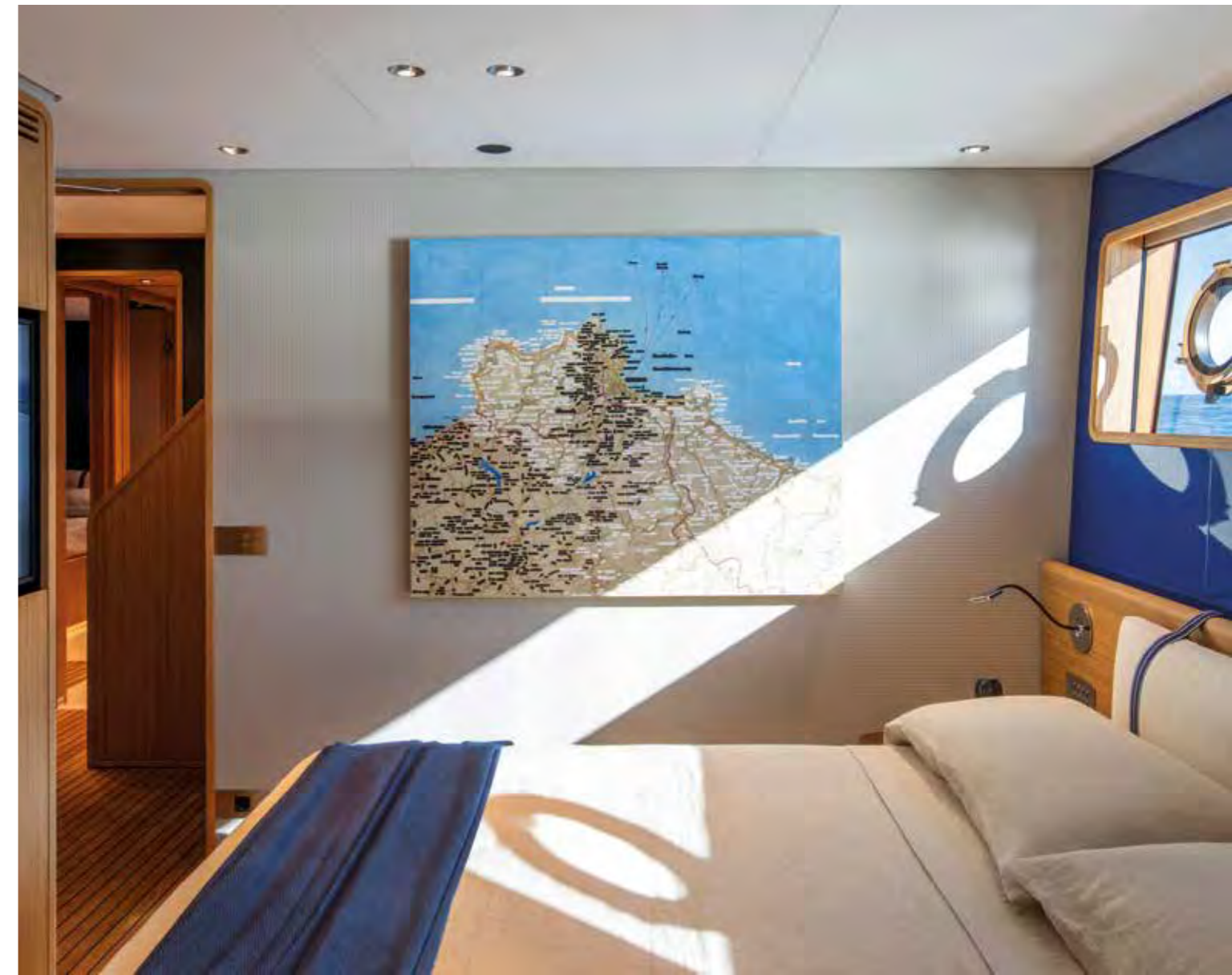
The **care of detail** and manufacturing processes draw on the noble art of cabinetmaking.







Styles, colours and natural materials: **everything can be personalized.** Choose your mood, discover your world.







Technical data

ENGINES

2 x MAN V8 1000 power 1000 mhp / 735 kW at 2300 rpm

2 x CAT C18 1150 power 1150 mhp / 847 kW at 2300 rpm

std

opt

SPEED (KNOTS)

Maximum speed

Cruising speed

Economic cruising speed

MAN 1000

14,5

13

10

CAT 1150

15

13

10

RANGE (NAUTICAL MILES)

Maximum speed

Cruising speed

Economic cruising speed

MAN 1000

500

850

2050

CAT 1150

500

800

2000

MAIN SIZES

Loa = overall length (standard ISO 8666)

28,43

m/ft. in.

93' 3"

Lh = Hull length (standard ISO 8666)

23,98

m/ft. in.

78' 8"

Lwl = waterline length (boat fully laden)

23,91

m/ft. in.

78' 5"

Maximum beam

7,31

m/ft. in.

24' 0"

Depth under propellers (boat fully laden)

2,20

m/ft. in.

7' 3"

Displacement unladen

115

t/lb

253532

Displacement laden

135

t/lb

297624

Maximum number of persons on board

20

Design category Directive 2013/53/EU

A

Certification modules

B + F + Aa (sound emission) RINA S.p.A.

TECHNICAL DATA

Hull type: semi-displacement with soft-chine

11,78

m/ft. in.

38' 8"

H = Overall height from keel to antennas mast

8,91

m/ft. in.

29' 3"

Ht = Minimum transport height from keel

4,45

m/ft. in.

14' 7"

P = Bow and stern protrusions

14500

lt./US gals.

3830

Fuel tank capacity

2500

lt./US gals.

660

Water tanks capacity

PERFORMANCE SPECIFICATIONS

the performance is estimated at the following conditions:

120

t/lb

265642

standard version displacement of the yacht

at 1/3 liquid load, clean hull, 25°C air temperature

good weather conditions, 6 persons on board.

overloading the yacht by:

2

t/lb

4409

top speed decreases of:

1

knot

Engineering design: Ferretti Group

Exterior design: Filippo Salvetti

Interior architecture: Antonio Citterio Patricia Viel

PRELIMINARY

Profile

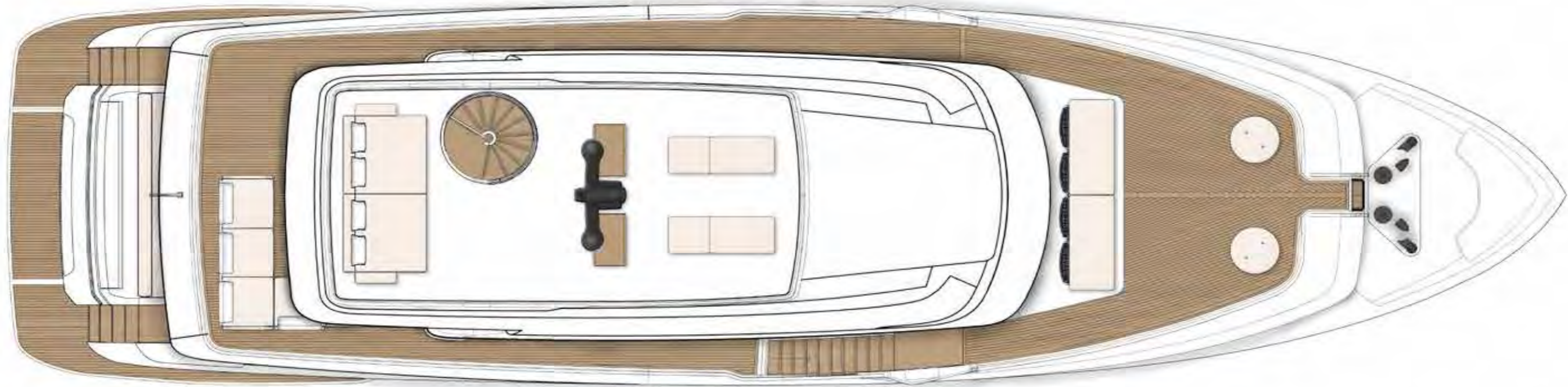


EXCELLENCE BY THE CUSTOM LINE ATELIER.

The **Custom Line Atelier** is our strategic team of talented project architects who **support the owner** right from the initial brief, to develop the yacht interior and tailor it to their lifestyle.

Infuse the yacht with your personal touch and style inspirations for an ambience with your own distinctive hallmark.

Sun deck



Upper deck



GENERAL ARRANGEMENT

INTERIOR DESIGN BY
CUSTOM LINE ATELIER

Main deck



Lower deck



GENERAL ARRANGEMENT

INTERIOR DESIGN BY
CUSTOM LINE ATELIER

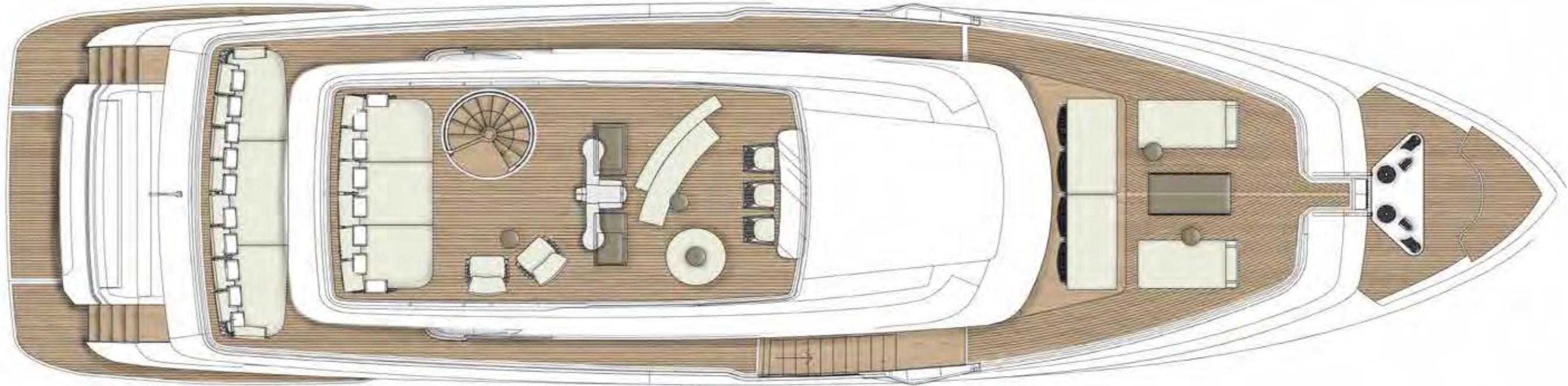
Upper deck Alfresco dining version



Main deck Dining room version



Sun deck



Upper deck



Main deck



Lower deck





**PETREL GLOBAL SHIPS
& BOATS TRADING LLC**

Office 621, 6th Floor Block A, Business Village,
Port-Saeed Deira, Dubai UAE
www.petrel-global.com, tel.: +971 52 821 6411