

Chris + Craft®



**PETREL GLOBAL SHIPS
& BOATS TRADING LLC**

Business Village-Block B 3d Floor, office
309-310, 221 Al Maktoum Rd, Dubai, UAE
www.petrel-global.com, tel.: +971 52 821 6411

Launch 28 GT

Technical data



Length	8,72 m
Beam	2,59 m
Weight	3 538 kg
Draft, max	0,92 m
Max power	430
Water tank	75,7 l.
People on board	12 people
Fuel capacity	321,7 l.



**PETREL GLOBAL SHIPS
& BOATS TRADING LLC**

Business Village-Block B 3d Floor, office
309-310, 221 Al Maktoum Rd, Dubai, UAE
www.petrel-global.com, tel.: +971 52 821 6411

Launch 28 GT

Standard features

Teak Maintenance Kit
Teak Caulk Color – black
3 Yr - Chris-Craft protection plan
5 Yr - transferable hull/structural warranty
Bow Scuff Plate - SS
Certifications and Standards - NMMA, ABYC, USCG
Deck Fill Plates - SS
Deck - diamond pattern non-skid, fiberglass
Flag/Pennant - embroidered Chris-Craft and US Flag kit w/SS magnetic pole and base
Color Selections - base gel, Ivory Cream
Color Selections - boot stripe - multiple color selections
Gunnel Trim Rubrail - molded PVC w/SS insert
Hardware - bow and stern eyes, SS
Hardware - bow light cover, SS
Hardware - chrome plated SS fasteners
Hardware - cleats, SS mooring
Hardware - high end fit n finish w/316L SS and Chris-Craft logo
Hardware - thru-hull fittings, SS
Hatches - vacuum infused w/ SS shocks
Hull - Chris Craft trademark Tumblehome design
Hull - deep V bottom w/flared bow
Hull - deck joint - mechanically, chemically bonded
Lighting - navigation lights, SS and international compliance
Logo - SS, Chris-Craft branded
Swim Ladder - 3 step, SS hidden
Swim Platform – integral
Swim Platform Grabhandle - SS
Beverage Holders - Stainless Steel
Bolsters - padded gunwhale mounted
Drains – SS
Fuel System - EPA compliant
Grabrails - SS
Helm - compass, dash mounted
Helm - dash, gauge and switch panels w/silver perforated panels
Helm - dash light dimmer

Helm - ignition safety switch(es)
Helm - model designator, SS
Helm - steering wheel, mahogany
Helm - steering, tilt w/power assist
Helm - stereo remote, MP3/USB inputs w/Fusion Bluetooth enabled
Ladder - Stainless Steel boarding
Lighting - LED courtesy
Outlets/Input - 12v accessory outlet(s)
Outlets/Input - USB auxiliary input
Speakers - JL Audio Sound System
Stereo System - Fusion, AM/FM/Bluetooth/USB
Stereo System - Premium upgrade with amp and subwoofer
Stowage - aft deck compartments
Upholstery Construction - high density foam with antimicrobials and open cell mesh for drying
Vinyl - heavy duty, stain/UV resistant
Vinyl - multiple design/color selections
Windscreen - curved tempered glass
Windscreen - Stainless Steel Frame
Battery Charger
Battery Switch w/breakers
Battery Tray(s)
Bilge Pump - w/autofloat System
Electric Wiring - color coded and numbered w/Duetch connectors
Electrical Bonding System
Mercury V8 6.2L (300 HP) B3 DTS
Teak - bow accents w/SS inserts and Chris-Craft SS Logo inlay
Teak - cockpit steps
Teak - beverage holder accents
Teak - engine walk-over
Teak - grab rails (Aft)
Teak - helm footpad / footrests
Air Intakes - SS
Anchor - bow locker - w/teak and Chris-Craft logo inlay
Hull - stringer system and liner, 1 piece fiberglass foam filled for floatation and noise reduction



Standard features



- Ski Pylon - removable (*pop-up)
- Swim Platform - integral w/ 3-step ladder
- Trim Tabs - Lenco
- Ventilation Grates/Stainless Steel
- Door - wind, hinged, folds to deck in bow area
- Galley - refrigerator
- Helm - depth finder - LCD
- Helm - digital gauge package, Chris-Craft branded
- Helm - engine controls, Electronic Control - EVC/DTS/DEC
- Helm - Engine control, chrome, side mounted
- Helm - horn, electric trumpet(s)
- Helm - trim tab controls
- Seating - aft cockpit, port and starboard rear facing sun loungers
- Seating - aft U-shaped Seating - bucket seats w/integrated SS handrails and flip-up bolsters
- Seating - forward, circular w/forward facing port and starboard lounges
- Seating - portside passenger, chair w/flip-up bolster, swivel and SS integrated grab handles
- Seating - sunpad, large aft w/ transom walk-over (*includes filler pad)
- Shower - transom
- Stowage - aft cockpit, underseat
- Stowage - bimini, dedicated under engine hatch
- Stowage - bow, port and starboard recessed
- Stowage - coaming w/beverage holders
- Stowage - fender, hidden
- Stowage - infloor ski/rod
- Stowage - infloor w/built-in cooler
- Stowage - port and starboard underseat
- Windscreen - tempered glass, center walk-thru
- Toilet - porti-potti
- Bilge System - electric w/blowers
- Electric Wiring - tinned copper
- Engine Compartment Stowage
- Engine Hatch - emergency lift w/jumper posts
- Engine Hatch - w/SS hinges, electric rams
- Engine Hatch Insulation - acoustical barrier, Silver Mylar
- Fire Extinguish System - automatic w/manual override
- Fuel System - aluminum tanks w/anti-siphon valves and electric sending units



**PETREL GLOBAL SHIPS
& BOATS TRADING LLC**

Business Village-Block B 3d Floor, office
309-310, 221 Al Maktoum Rd, Dubai, UAE
www.petrel-global.com., tel.: +971 52 821 6411

Launch 28 GT



Optional features

Standard Edition (STERNDRIVE)
Standard Edition (OUTBOARD)
Heritage Trim Edition (STERNDRIVE)
Heritage Trim Edition (OUTBOARD)
Heritage Edition (STERNDRIVE)
Heritage Edition (OUTBOARD)
Hull color
Vynil color
Stitching color
Bimini Top
Stowable Mediterranean Cockpit Sun Shade
GT Power Folding Top, Canvas with Tow Point
GT Hard Top
Air Compressor - 12V with Storage Rack
Bow Docking Lights - LED
Bow Filler Cushion
Bow Thruster
CE Certification
Cockpit Galley w/ Sink & Second Refrigerator
Cover - Cockpit & Bow (Color same as canvas top)
Cover - Single Outboard (OUTBOARD)
Dockside Pump Out
Fender Clips (4)
Ladder - Beach Boarding
Mediterranean Storable Sun Shade - Bow
Multifunction Electronics Display 10"
Ocean Shipping Cradle
Pillows - Weighted (4)
Premium Audio System
Sirius Satellite Radio - USA & CAN Only (no subscription)
Table - Teak Cockpit
Tecma Head System (includes dockside pumpout)
Underwater Lights (2)
Water Ready Option - Includes Batteries
Windlass with SS Anchor and Approx 100' line

Windlass with SS Anchor and Approx 100' chain
Mooring cover
Seagrass flooring



**PETREL GLOBAL SHIPS
& BOATS TRADING LLC**

Business Village-Block B 3d Floor, office
309-310, 221 Al Maktoum Rd, Dubai, UAE
www.petrel-global.com., tel.: +971 52 821 6411

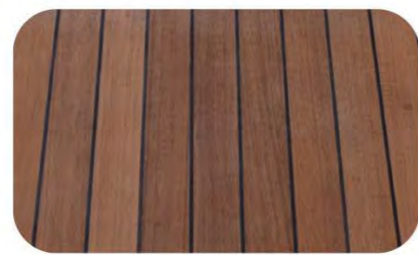
Launch 28 GT

Color (interior)

Color (exterior)



Blond



Black

Natural wood (interior)



Walnut



Zebra wood



White washed oak

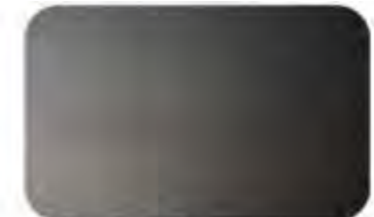
Primary colors of the boat hull



Dark Graphite



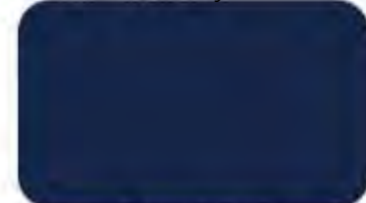
Blue Crystal



Charcoal



Fountain Blue



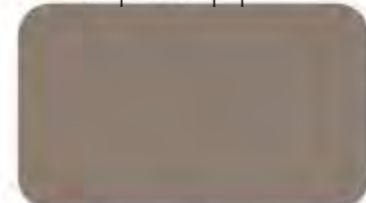
Deep Sapphire



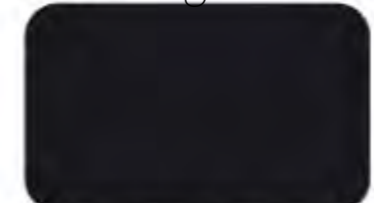
Sage



Midnight Blue



Cashmere



Black Pearl



Silver Metallic

STRIPE (GEL)



Midnight Blue



Riviera Red



Coach



Black

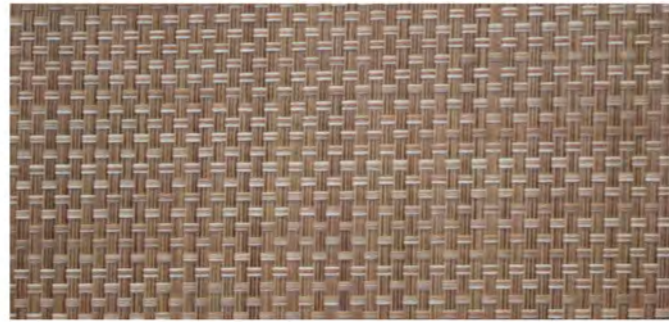


Cream



Color (interior)

Wicker floor color

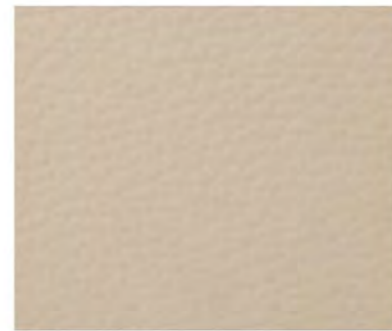


Dune

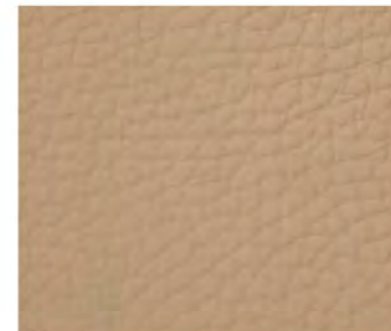


Boucle

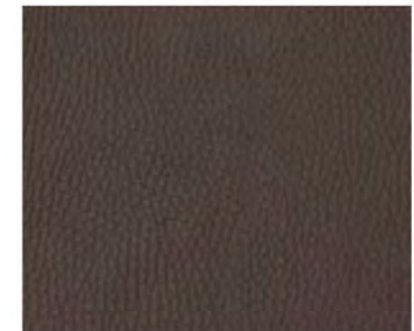
Vinyl colors



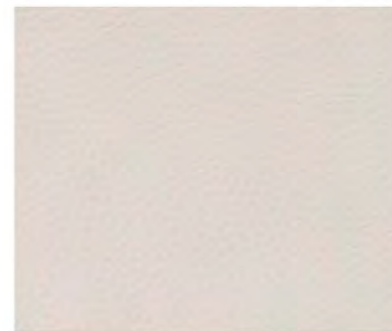
Almond



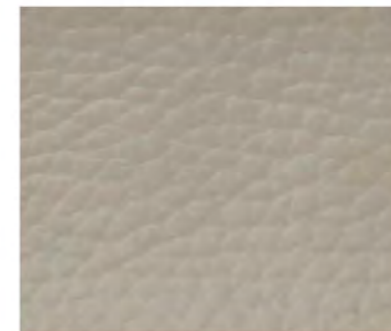
Toffee



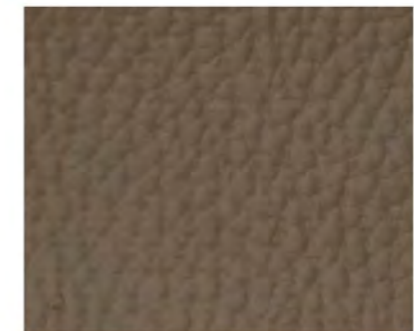
Mocha



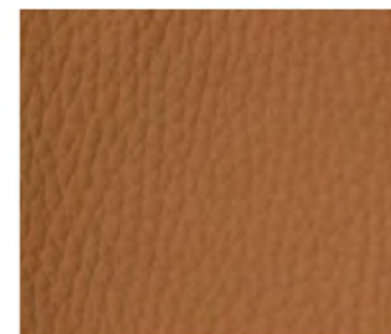
Oyster



Stone



Portabella



Saddle



Color (interior)



Oyster / Oyster



Almond / Almond



Toffee / Toffee



Saddle / Saddle



Almond / Saddle



Almond / Navy





MERCURY
6.2L V8 350ЛС
B3 DTS(стд)



MERCURY
8.2L V8 380ЛС / 430 ЛС
B3 FWC DTS

Engine

- Mercury V8 6.2L (350HP) B3 DTS (STERNDRIVE)
- Mercury V8 8.2L (380HP) B3 FWC DTS (STERNDRIVE)
- Mercury V8 8.2L (430HP) B3 FWC DTS (STERNDRIVE)
- Volvo V8 5.3L (350HP) DP FWC EVC (STERNDRIVE)
- Volvo V8 6.2L (380HP) DP FWC EVC (STERNDRIVE)
- Volvo V8 6.2L (430HP) DP FWC EVC (STERNDRIVE)
- Mercury Verado - Single (350 PSHP) 4 Stroke - DTS (OUTBOARD)
- Mercury Verado - Single (400 PSHP) 4 Stroke - DTS (OUTBOARD)



VOLVO
5.3L V8 350ЛС
DP FWC EVC



VOLVO
6.2L V8 380ЛС / 430ЛС
DP FWC EVC

Engine options

- Active Trim
- Seacore (STERNDRIVE)
- Selectable Exhaust (STERNDRIVE)
- High Altitude (STERNDRIVE)
- Wake Surf (WSX) Technology Package (STERNDRIVE)
- Coastal Series (STERNDRIVE)
- Selectable Exhaust (N/A with WSX Surf Technology Package) (STERNDRIVE)
- Ivory Cream Painted Outboard (OUTBOARD)
- Custom Color Painted Outboard (OUTBOARD)





**PETREL GLOBAL SHIPS
& BOATS TRADING LLC**

Business Village-Block B 3d Floor, office
309-310, 221 Al Maktoum Rd, Dubai, UAE
www.petrel-global.com, tel.: +971 52 821 6411

Launch 28 GT

10