

A85

ARCADIA
YACHTS



**PETREL GLOBAL SHIPS
& BOATS TRADING LLC**

Office 621, 6th Floor Block A, Business Village.
Port-Saeed Deira, Dubai UAE
www.petrel-global.com, tel.: +971 52 821 6411



ARCADIA
YACHTS



**PETREL GLOBAL SHIPS
& BOATS TRADING LLC**

Office 621, 6th Floor Block A, Business Village.
Port-Saeed Deira, Dubai UAE
www.petrel-global.com, tel.: +971 52 821 6411

A85

2

TECHNICAL DATA

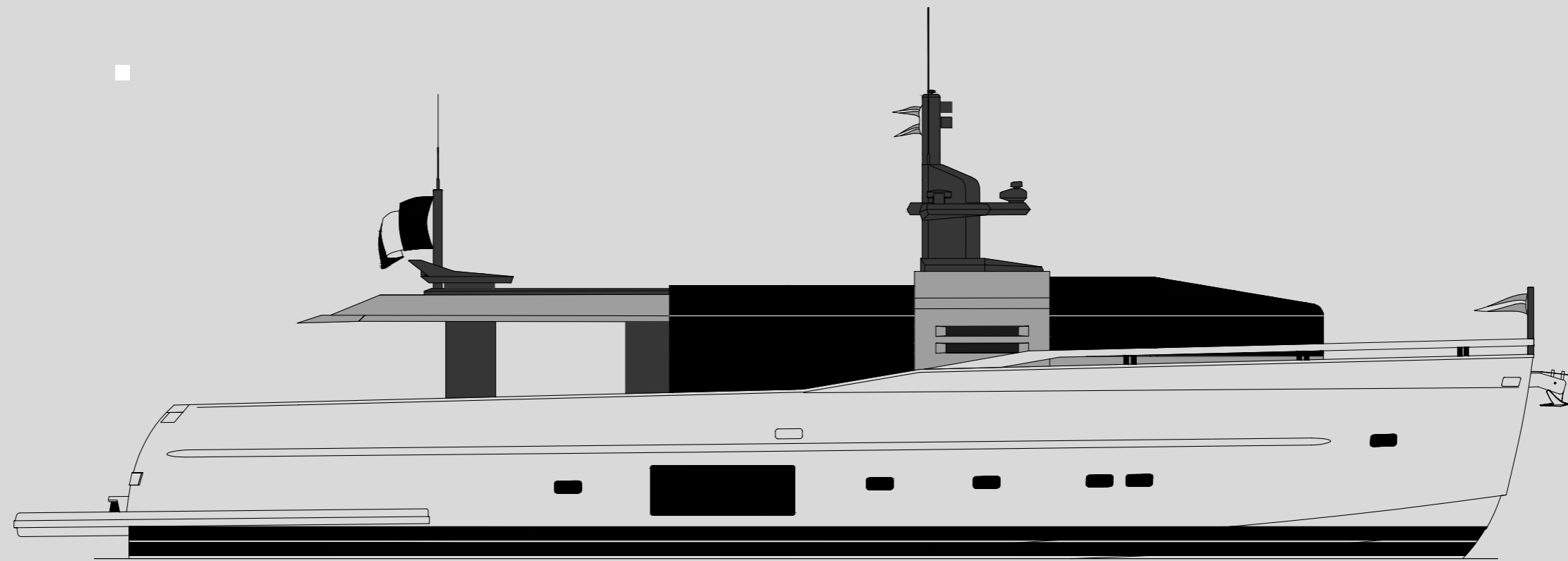
Type	Semi-displacement
Hull Material	GRP
LOA, m	25,91
Beam, m	7,14
Draught, m	1,72
Displacement, full load	81
Engines	2 x MAN i6 800
Cruising speed, knots	14
Max speed, knots	17
Generators	2 x 28 kW
Fuel tank, l.	9 300
Water tank, l.	1 600



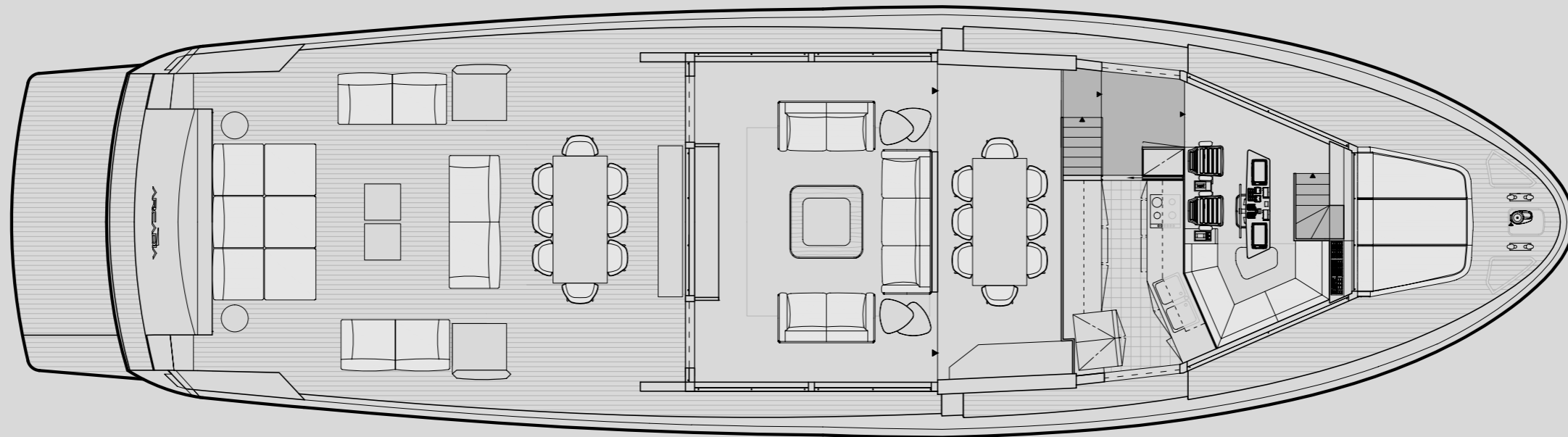
LAYOUT

ARCADIA A85

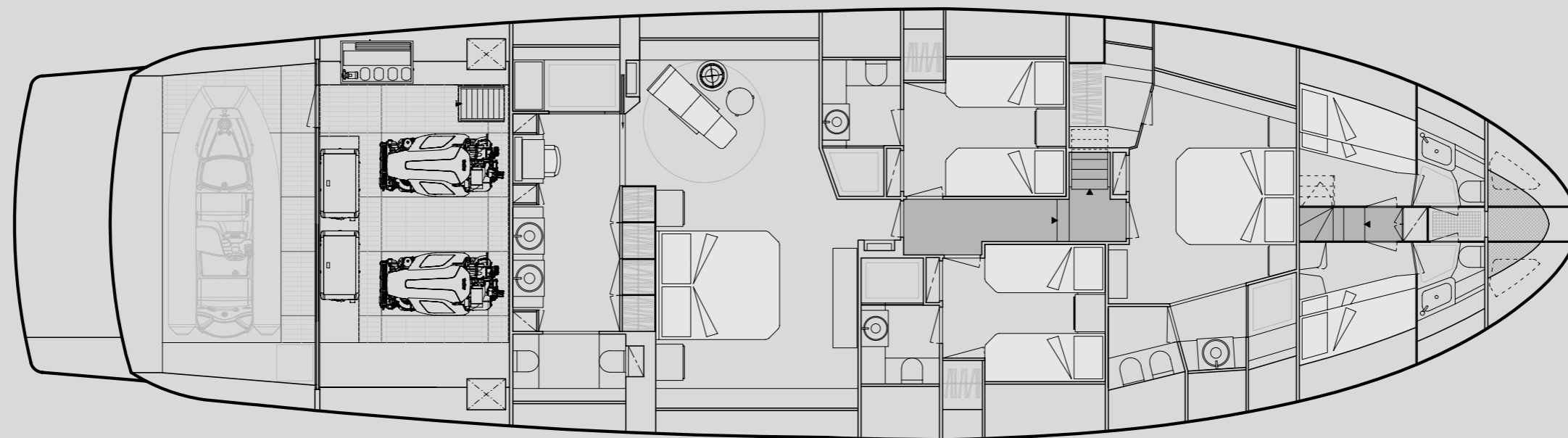




STANDARD LAYOUT



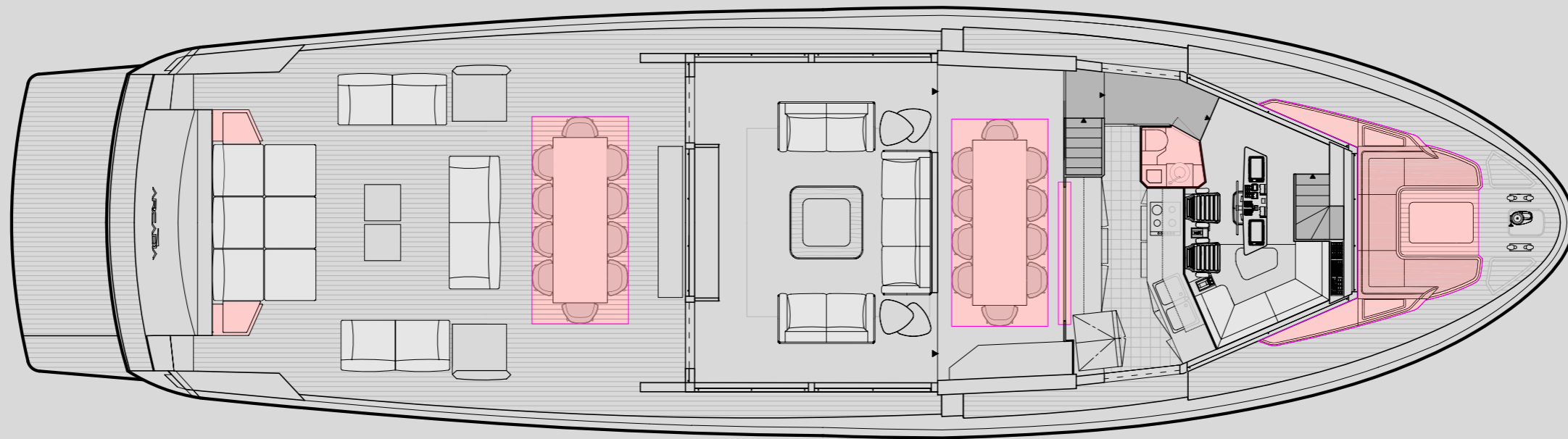
MAIN DECK



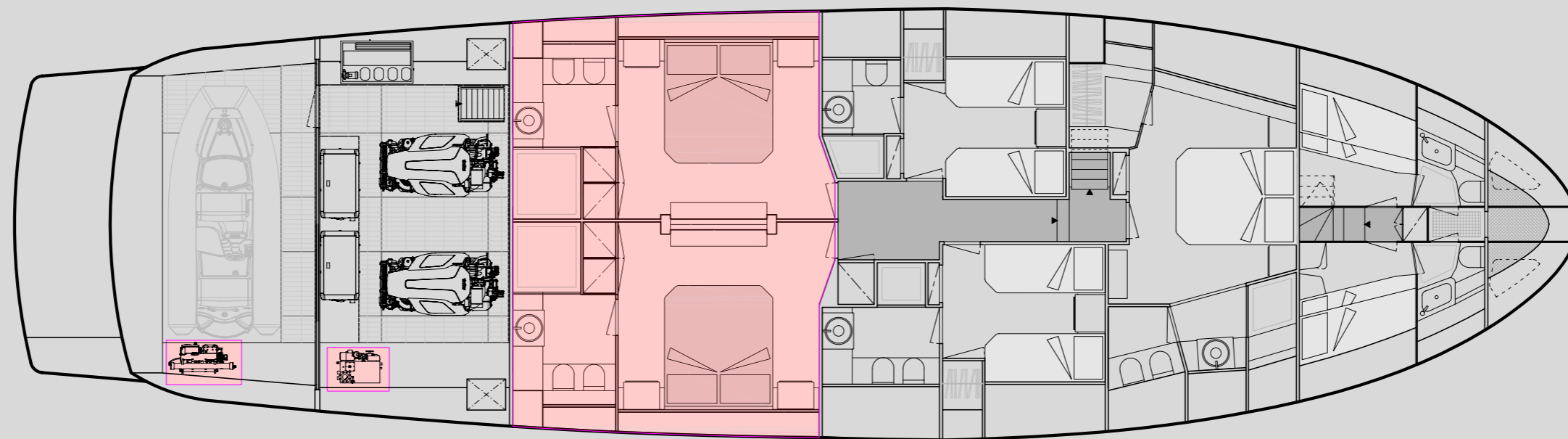
LOWER DECK



OPTIONAL LAYOUT



MAIN DECK



LOWER DECK

 OPTIONAL CHANGES AVAILABLE





























ARCADIA
YACHTS



**PETREL GLOBAL SHIPS
& BOATS TRADING LLC**

Office 621, 6th Floor Block A, Business Village.
Port-Saeed Deira, Dubai UAE
www.petrel-global.com, tel.: +971 52 821 6411

A85

20

ARCADIA
YACHTS



**PETREL GLOBAL SHIPS
& BOATS TRADING LLC**

Office 621, 6th Floor Block A, Business Village.
Port-Saeed Deira, Dubai UAE
www.petrel-global.com, tel.: +971 52 821 6411