

Custom Line 106



**PETREL GLOBAL SHIPS
& BOATS TRADING LLC**

Office 621, 6th Floor Block A, Business Village,
Port-Saeed Deira, Dubai UAE
www.petrel-global.com, tel.: +971 52 821 6411

we see
a masterly design.











The only direction
is **inspiration**.





A new **futurist manifesto**.
Irrepressible, vibrant, fast.
Black, white, contrasts.
And character in every detail.





Dimensions

32,82 meters

overall length

7,3 meters

maximum beam

3 decks

Dreams

need their space.



The landscape
is an **endless** skyline.



Facts & Figures

1050 nautical miles

range at 10 knots

26 knots

maximum speed

23 knots

cruising speed

Custom Line 106'

Where time stops
and inspiration flows.



A real journey leads
to new excitement
to **new experiences.**





we see
a perfect design.







Interior **style**
delights when seen
looking outwards





Amazing
panoramic views

360°

panorama

1

openable floor-to-ceiling side windows

Where the horizon
becomes a beautiful vision.



See another sea with
the **Custom Line 106'**.

A reflection of the owner's personality,
she's more than a yacht;
she's a unique masterpiece.
Because cruising is an art.
The art of being different.



we see
a vision of beauty.





Perfection exists.
In every shape,
in every wave.





Travelling is gazing
at sensations.







Key features

6,5 metre-wide

full-beam master cabin with

1

optional suspended terrace
over the water with panoramic views

1

innovative semi-floodable garage

1

unprecedented soundproofing

For oceans of sensations,
choose the sea.



we see a fantastic
sculpture.





Grand layouts

220 sqm

of exterior floor space

36 sqm

forward area

53 sqm

sun deck

The most inspiring horizon
is the one that's yet to be discovered.

Elegance and verve,
all on one deck.
Or rather, three.







Beauty is simplicity.
Simply wonderful.









Where artistry takes unexpected forms, to **amaze** at each new glance.





Cruising means
creating your story.





Custom Line 106'.
Far away, so close.







Surprise is discovering how mere lines can make a great masterpiece.





GENERAL ARRANGEMENT BY CUSTOM LINE ATELIER

Profile

Technical data



EXCELLENCE BY THE CUSTOM LINE ATELIER.

The **Custom Line Atelier** is our strategic team of talented project architects who **support the owner** right from the initial brief, to develop the yacht interior and tailor it to their lifestyle.

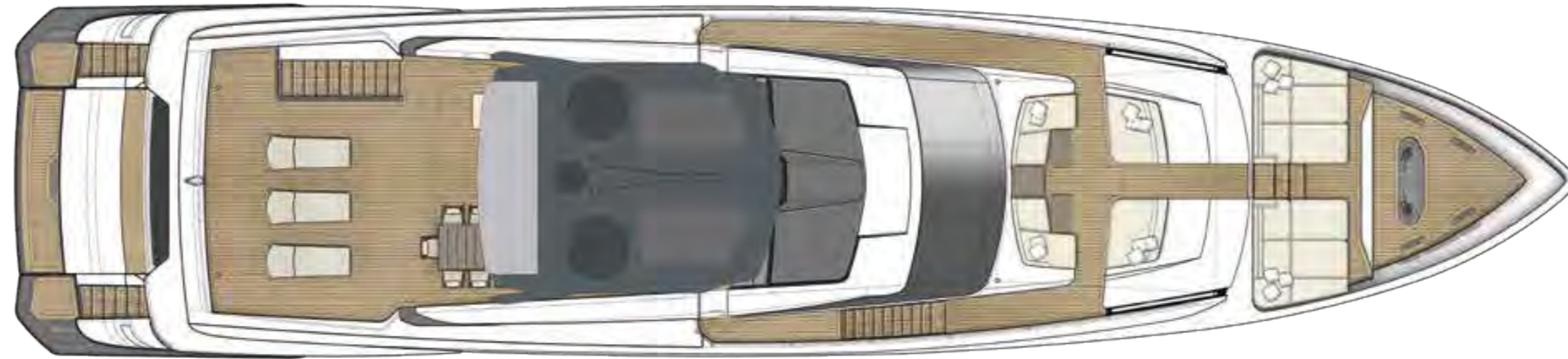
Infuse the yacht with your personal touch and style inspirations for an ambience with your own distinctive hallmark.

ENGINES			
2 x MTU 16V 2000 M86 power 2217 mhp / 1630 kW at 2450 rpm			std
2 x MTU 16V 2000 M96L power 2638 mhp / 1939 kW at 2450 rpm			opt
SPEED (knots)			
Maximum recorded speed	MTU 2217	MTU 2638	
Cruising speed	23	26	
Economic cruising speed	20	22	
	12	12	
RANGE (nautical miles)			
Maximum speed	MTU 2217	MTU 2638	
Cruising speed	400	360	
Economic cruising speed	450	400	
	1050	1050	
MAIN SIZES			
Loa = Overall length (standard ISO 8666)	32,82	m/ft. in.	107' 8"
Lh = Hull length (standard ISO 8666)	32,82	m/ft. in.	107' 8"
Lwl = waterline length (boat fully laden)	26,74	m/ft. in.	87' 9"
Maximum beam	7,30	m/ft. in.	23' 11"
Depth under propellers (boat fully laden)	2,03	m/ft. in.	6' 8"
Displacement unladen	126	t/lb	277782
Displacement laden	146	t/lb	321875
Gross Tonnage	210	GT	
Maximum number of persons on board			20

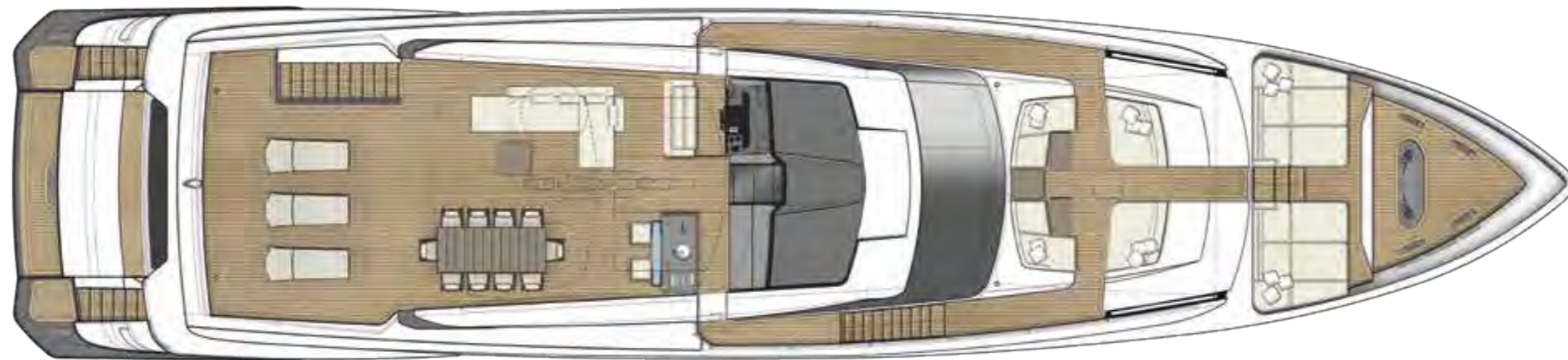
Certification			
RINA Class Certificate for Pleasure Yachts, C * HULL, • MACH, Y, Unrestricted Navigation			
5 TECHNICAL DATA			
Hull type: warped hull with spray rails and aft deadrise	10	°	
H = Overall height from keel	13,23	m/ft. in.	43' 5"
P = swim platform	0,00	m/ft. in.	0' 0"
Fuel tanks capacity	14700	lt./US gals.	3884
Water tanks capacity	3000	lt./US gals.	793
PERFORMANCE SPECIFICATIONS			
the performance is estimated at the following conditions: standard version displacement of the yacht: at half liquid load, clean hull, 25°C air temperature, good weather conditions, 8 persons on board	135	t/lb	297346
overloading the yacht by	3	t/lb	6614
top speed decreases of	1	knot	
Engineering design: Ferretti Group			
Exterior design: Francesco Paszkowski Design			
Interior architecture: Francesco Paszkowski Design			
Interior design: Custom Line Atelier			

GENERAL ARRANGEMENT BY CUSTOM LINE ATELIER

Top view



Raised Pilot House

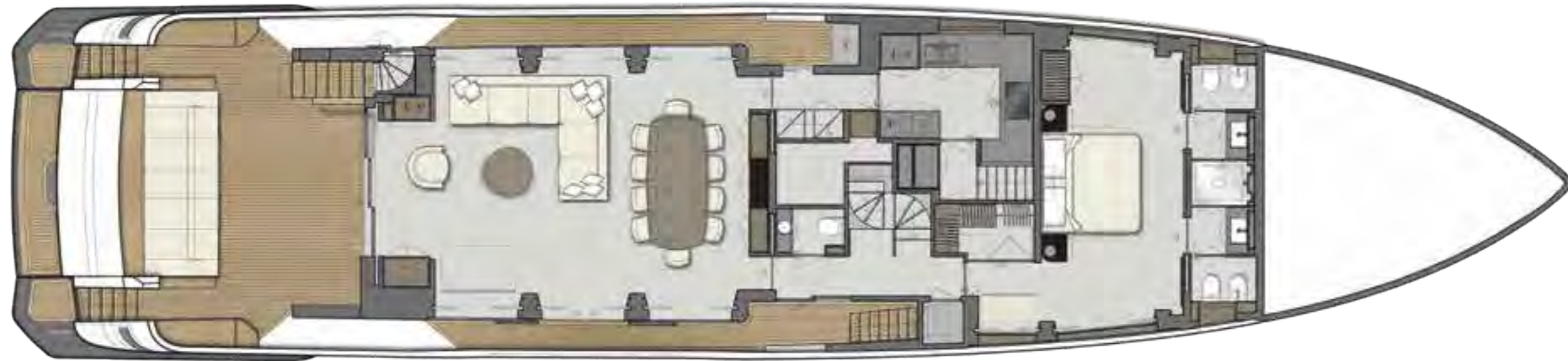


Upper deck



GENERAL ARRANGEMENT BY CUSTOM LINE ATELIER

Main deck



Lower deck





Leading the Future

Creating Greatness

This is our commitment as a luxury yachting group. This is the spirit that drives us, individually and collectively. This is the value we bring for our employees, our brands, our clients and society as a whole.

Striving for Innovation

Ferretti Group delivers excellence through constant innovation and pioneering technology. This is how we achieve formidable performance and safety at sea, offering clients authentic experiences to satisfy their desires for affirmation and self-expression.

Going Global

Ferretti Group always endeavours to be close to the market and to our customers, doing whatever it takes to deliver exceptional performance. We have built up an agile, resourceful international dealer network, supported by high-end marketing initiatives to enhance our brands' worldwide visibility and profile.

Empowering Expertise

We continually spur each of our brands to go further. We leverage their special know-how, artisanal accomplishment and technological expertise to stay at the cutting edge of the nautical world.

Creating Value

We focus our energy and resources on supporting our brands in their long-term development, further boosting their ability to create value. This has earned us extraordinary success over the years, helping the group become a pre-eminent player in today's yachting sector.

Softening our impact on the environment

Ever aware of the need to consider the environmental and social side-effects of our products and processes, Ferretti Group publishes a Sustainability Report every year. This document maps the main impacts of our activities and outlines the initiatives in place towards more sustainable development.



PERSHING

itama

Riva

CRN

CUSTOM LINE



**PETREL GLOBAL SHIPS
& BOATS TRADING LLC**

Office 621, 6th Floor Block A, Business Village.
Port-Saeed Deira, Dubai UAE
www.petrel-global.com, tel.: +971 52 821 6411