

BOSTON
WHALER

®



**PETREL GLOBAL SHIPS
& BOATS TRADING LLC**

Business Village-Block B 3d Floor, office
309-310, 221 Al Maktoum Rd, Dubai, UAE
www.petrel-global.com, tel.: +971 52 821 6411

280 OUTRAGE



**PETREL GLOBAL SHIPS
& BOATS TRADING LLC**

Business Village-Block B 3d Floor, office
309-310, 221 Al Maktoum Rd, Dubai, UAE
www.petrel-global.com, tel.: +971 52 821 6411

280 OUTRAGE



**PETREL GLOBAL SHIPS
& BOATS TRADING LLC**

Business Village-Block B 3d Floor, office
309-310, 221 Al Maktoum Rd, Dubai, UAE
www.petrel-global.com, tel.: +971 52 821 6411

280 OUTRAGE

TECHNICAL DATA



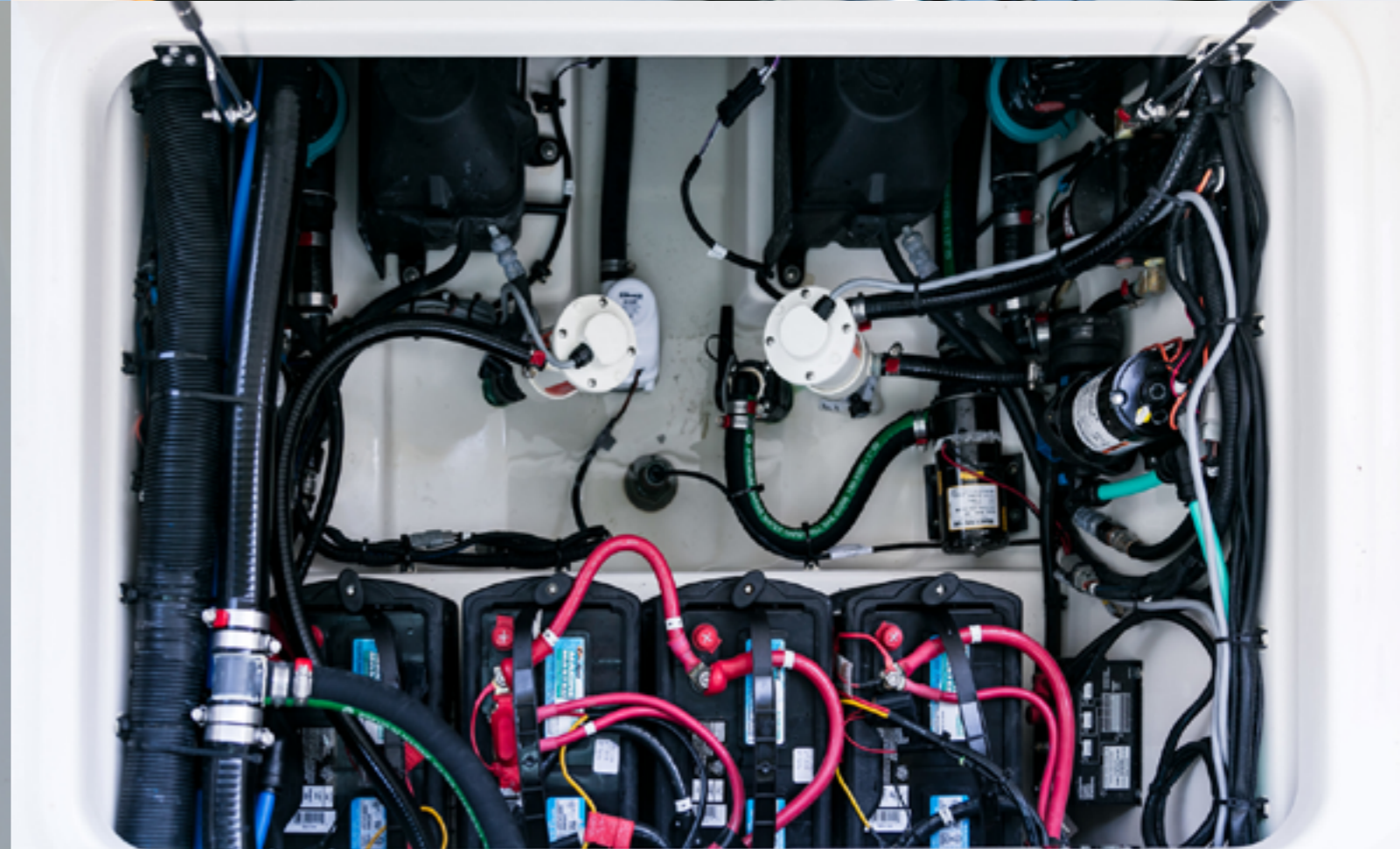
L.O.A.	28' (8.53 m)
Beam	9' 4" (2.84 m)
Draft	22" (.56 m)
Weight (dry, no engine)	6,200 lbs (2,812 kg)
Weight (with engines, fuel and water)	8,961 lbs (4,065 kg)
Maximum Weight Capacity	3,750 lbs (1,701 kg)
Swamped Capacity	4,450 lbs (2018 kg)
Persons Capacity	12
Maximum Horsepower	800 hp (597 kW)
Minimum Horsepower	500 hp (373 kW)
Maximum Engine Weight	1,400 lbs (635 kg)
Transom Height	25" (.64 m)
Deadrise at Transom	23°
Fuel Capacity	186 gallons (704 L)
Water Capacity	26 gallons (98.4 L)
Waste Capacity	6.5 gallons (24.6 L)
Livewell Volume	30 gallons (113.5 L)
Bridge Clearance (with hardtop)	8' 6 .5" (2.6 m)
Bridge Clearance (with hardtop and radar)	9' 11.5" (3.04 m)
Package Boat Specs (on trailer/engine up)	38' 3"L X 9' 4"W X 12' 1"H
European Certification	B
European Certification	C



**PETREL GLOBAL SHIPS
& BOATS TRADING LLC**

Business Village-Block B 3d Floor, office
309-310, 221 Al Maktoum Rd, Dubai, UAE
www.petrel-global.com., tel.: +971 52 821 6411

280 OUTRAGE



**PETREL GLOBAL SHIPS
& BOATS TRADING LLC**

Business Village-Block B 3d Floor, office
309-310, 221 Al Maktoum Rd, Dubai, UAE
www.petrel-global.com., tel.: +971 52 821 6411

280 OUTRAGE



**PETREL GLOBAL SHIPS
& BOATS TRADING LLC**

Business Village-Block B 3d Floor, office
309-310, 221 Al Maktoum Rd, Dubai, UAE
www.petrel-global.com, tel.: +971 52 821 6411

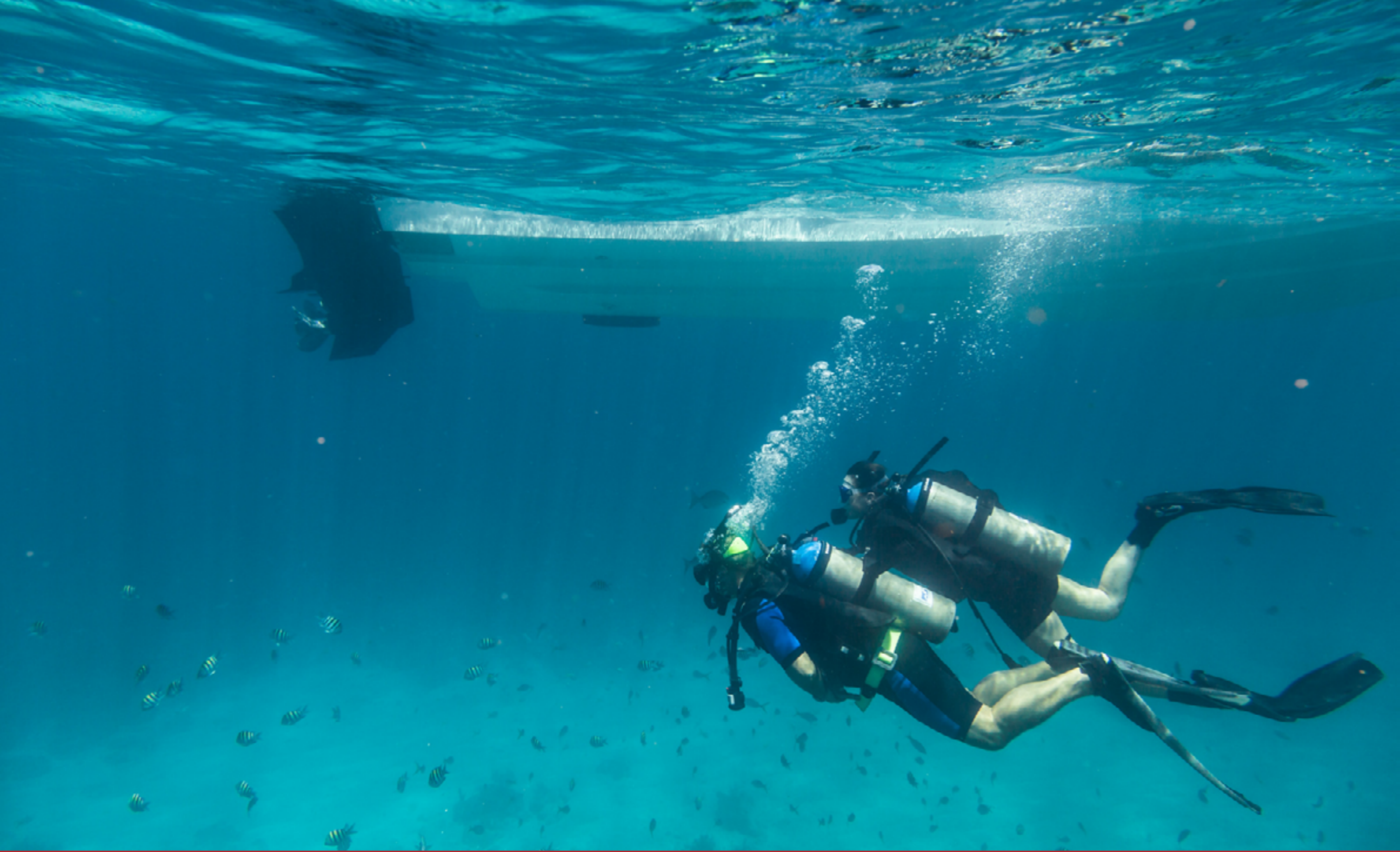
280 OUTRAGE



**PETREL GLOBAL SHIPS
& BOATS TRADING LLC**

Business Village-Block B 3d Floor, office
309-310, 221 Al Maktoum Rd, Dubai, UAE
www.petrel-global.com, tel.: +971 52 821 6411

280 OUTRAGE



**PETREL GLOBAL SHIPS
& BOATS TRADING LLC**

Business Village-Block B 3d Floor, office
309-310, 221 Al Maktoum Rd, Dubai, UAE
www.petrel-global.com, tel.: +971 52 821 6411

280 OUTRAGE



**PETREL GLOBAL SHIPS
& BOATS TRADING LLC**

Business Village-Block B 3d Floor, office
309-310, 221 Al Maktoum Rd, Dubai, UAE
www.petrel-global.com, tel.: +971 52 821 6411

280 OUTRAGE



**PETREL GLOBAL SHIPS
& BOATS TRADING LLC**

Business Village-Block B 3d Floor, office
309-310, 221 Al Maktoum Rd, Dubai, UAE
www.petrel-global.com, tel.: +971 52 821 6411

280 OUTRAGE

10



**PETREL GLOBAL SHIPS
& BOATS TRADING LLC**

Business Village-Block B 3d Floor, office
309-310, 221 Al Maktoum Rd, Dubai, UAE
www.petrel-global.com, tel.: +971 52 821 6411

280 OUTRAGE

11

STANDARD EQUIPMENT

- All Rails Welded 316-L Stainless Steel
- All Hardware 316-L Stainless Steel

DECK / COCKPIT

- 28" interior freeboard
- 8" stainless steel cleats; bow (2), spring line (2), stern with hawse pipes (2), anchor locker (1)
- Acrylic transom door with stainless steel latch
- Aft coaming bolsters
- Aft tackle storage center (port side) (2 drawers)
- Bow and stern eyes
- Cockpit and bow courtesy lights
- Drink holders; (2) in bow, (2) in hawse pipes, (2) in leaning post, (2) in console)
- Heavy-duty rub rail
- Low profile grab rails welded stainless steel
- Molded fiberglass portside dive/boarding door with removable stainless steel dive ladder
- Motorwell drains
- Port aft storage (2)
- Rod holders – gunnel mounted stainless steel (6)
- Rod holders – transom mounted stainless steel (3)
- Rod racks – under gunnel
- Self-bailing cockpit sole
- Steel toe rails – stainless steel
- Swim platform with covered telescoping swim ladder with stainless steel grab rail
- Thru hull anchor roller davit – stainless steel

CONSOLE / HEAD

- 12 V receptacle
- Access panels to electronics
- Acrylic entry door with lock
- Bi-level molded console footrests
- Compass

- Drink holders (2)
- Easy access storage space for personal items
- Electronics surface that accommodates two (12") displays
- Enclosed head/storage area in console with easy clean liner
- Glove box – lockable dry storage
- Fold-down step inside console
- Instrumentation and electrical switch panel with circuit breaker protection and illuminated text
- Interior courtesy light
- Port light with screen stainless steel
- Portable head with pump-out
- Remote ignition key switches with pushbutton start at helm
- Steering wheel with knob – cast stainless steel
- Dash visor

ELECTRICAL

- 12" Simrad NSX Electronics/Navigation Package, Simrad NSX 12" MFD (GPS, chart plotter, fishfinder), Active Imaging 3 in 1 transom mount transducer (CHIRP, SideScan, DownScan), C-MAP® DISCOVER™ X chart card: North America/Canada

SEATING

- Foldaway stern seat
- Forward console seat with integrated storage

T-TOP (WHITE OR BLACK DEPENDING ON FRAME COLOR SELECTION)

- Bow area floodlight
- Cockpit floodlights (3)
- Dome light (red and white)
- Life jacket storage
- Rod holders (5) (white or black depending on frame color selection)

DELUXE LEANING POST WITH LIVEWELL

- Bait prep area



STANDARD EQUIPMENT

- Drink holders (2)
- Grab rail – welded stainless steel
- Livewell lights – red
- Pressurized livewell with clear lid and blue interior (30 gallons)
- Rod holders (2)
- Sink with freshwater and pullout sprayer
- Tackle storage drawers (3) port side (deleted with optional deluxe leaning post with cooler)
- Tip-out trashcan (deleted with optional deluxe leaning post with cooler)
- Upholstered leaning post with flip-up bolster and backrest

STORAGE

- Aft tackle storage center (port side)
- Bow anchor locker with drain
- Dry storage areas in console (3)
- Forward deck storage / seats (port and starboard) with drains, gaskets, garage storage, lockable rod storage
- Forward in floor storage and (2) 5-gallon buckets
- Leaning post tackle storage
- Lockable console storage
- Port and starboard aft fishboxes with pump-out and drains
- Under gunnel rod racks (2 per side)

MECHANICAL

- 186-gallon fuel tank
- 250 V8 DTS Black Dual Mercury® Verado® engines with hydraulic power steering
- SmartCraft® Deluxe Gauge Package
- Automatic bilge pumps (750 GPH fwd and 1100 GPH aft)
- Battery trays (3) with switches
- Electric horn
- Electrical distribution/breaker panel with key switches (inside console)
- Engine fuel/water separators

- Fishbox pump-out (54 gallons each)
- Freshwater system with 26-gallon tank, sink at leaning post, transom shower, and anchor washdown
- LED navigation lights
- Propellers stainless steel
- Raw water washdown
- Recessed electric trim tabs with indicators
- Tilt steering

VESSELVIEW MOBILE

- Display key engine data on your smartphone (Android or Apple® iPhone)
- Bluetooth® connection vi VesselView® Mobile app (compatible while connected to stereo)
- Troubleshooting assistance with dealer notification



NOTABLE OPTIONS/ACCESSORIES

- ☐ Anchor Package – includes: stainless-steel anchor and anchor windlass (low profile with rode)
- ☐ Anchor windlass chain (150 feet) (must select Anchor Package)
- ☐ Battery charging system
- ☐ Batteries – GR31 AGM (factory installed)
- ☐ Bow tow eye
- ☐ Dive tank holders (4)
- ☐ Lighting – Underwater LED
- ☐ Livewell – 17 gallons – port aft
- ☐ Outriggers – radial outriggers (black)(for T-top)
- ☐ Outriggers – radial outriggers (black)(for hardtop)
- ☐ Premium Package – includes: 8" cross tie cleats at transom, bow cushions, cockpit line holders (4), fender clips (stainless-steel, qty 4), deluxe helm seating, forward coaming bolsters, pullout sprayer in console, stainless steel drink holders (12), under gunnel storage shelves, VacuFlush® toilet, holding tank, overboard discharge and dockside pump-out, VesselView® 4" Display (network connections to Simrad® with Navigation Package)
- ☐ Rails – split bow rail (replaces low profile rail)
- ☐ Rails – white rub rail with stainless steel insert
- ☐ Rails – black rub-rail with stainless insert
- ☐ Spotlight (must select hardtop option)
- ☐ Sunshade at bow
- ☐ Sunshade at cockpit
- ☐ Table – at bow with canvas cover (black or blue canvas)

SEATING

- ☐ Bow filler (includes bow cushions) (must select bow table) Spotlight (hardtop only)
- ☐ Deluxe helm seating
- ☐ Deluxe leaning post with cooler – includes: bench seat with backrest and flip-up thigh rise (optional dual helm seat with flip-up armrests can be selected), cooler – 35 qt YETI® with slide, drink holders (2), grab rails – stainless steel, 30 gallon livewell with red light, rod holders (2), sink with freshwater and pull out sprayer
- ☐ Fold down trolling seats

TOPS/TOWERS

- ☐ Hardtop with electronics box – includes: bow area flood light, cockpit flood lights (2), dome light (red and white), electronics box, windshield wiper, lifejacket storage, outrigger ready, rod holders (5) (white or black depending on frame color selection), tempered glass windshield with power actuated vent
- ☐ Hardtop gelcoat (hardtop underside color matches hull color) (options include abaco blue, classic desert tan, glacier green, light blue, light grey, platinum)
- ☐ T-top electronics box

COLORED HARDTOP FRAME

- ☐ White (standard)
- ☐ Black

ENGINES

- ☐ 250 V8 DTS White Dual Mercury® Verado® engines with hydraulic power steering
- ☐ 300 V8 DTS Black Dual Mercury Verado engines with hydraulic power steering
- ☐ 300 V8 DTS White Dual Mercury Verado engines with hydraulic power steering
- ☐ 250 V8 DTS Black Dual Mercury Verado with Joystick Piloting. Outboard docking system with joystick, electronic steering, Skyhook/autopilot keypad and functionality. (Simrad® or other standalone optional autopilot not permitted with Joystick Piloting) (must select Premium Package or VesselView® 4" display)
- ☐ 250 V8 DTS White Dual Mercury Verado with Joystick Piloting. Outboard docking system with joystick, electronic steering, Skyhook/autopilot keypad and functionality. (Simrad or other standalone optional autopilot not permitted with Joystick Piloting) (must select Premium Package or VesselView 4" display)
- ☐ 300 V8 DTS Black Dual Mercury Verado with Joystick Piloting. Outboard docking system with joystick electronic steering, Skyhook/autopilot keypad and functionality. (Simrad or other standalone optional autopilot not permitted with Joystick Piloting) (must select Premium Package or VesselView 4" display)
- ☐ 300 V8 DTS White Dual Mercury Verado Joystick Piloting. Outboard docking system with joystick, electronic steering, Skyhook/autopilot keypad and functionality. (Simrad or other standalone optional autopilot not permitted with Joystick Piloting) (must select Premium Package or VesselView 4" display)
- ☐ 400 V10 DTS Black Dual Mercury Verado with hydraulic power steering



NOTABLE OPTIONS/ACCESSORIES

- ☐ 400 V10 DTS White Dual Mercury Verado with hydraulic power steering
- ☐ 400 V10 DTS Black Dual Mercury Verado Joystick Piloting. Outboard docking system with joystick electronic steering, Skyhook/autopilot keypad and functionality. (Simrad or other standalone optional autopilot not permitted with Joystick Piloting) (must select Premium Package or VesselView 4" Display)
- ☐ 400 V10 DTS White Dual Mercury Verado Joystick Piloting. Outboard docking system with joystick, electronic steering, Skyhook/autopilot keypad and functionality. (Simrad or other standalone optional autopilot not permitted with Joystick Piloting) (must select Premium Package or VesselView 4" Display)

ELECTRONICS

- ☐ Stereo system (JL Audio integration into Simrad® Navigation Package), JL Audio MM105-HR stereo with dash mounted remote volume/mute knob, AM/FM/HD radio, USB audio, and iPhone®/Android® compatible via integrated Bluetooth® 5.0, JL waterproof speakers (6), 8" subwoofer, and 800 watt amplifier
- ☐ Auto pilot (not compatible with Joystick Piloting), Simrad NAC-2 autopilot computer
- ☐ 12" Simrad NSX additional display Electronics Package, Simrad NSX 12" MFD (GPS, chart plotter, fishfinder)
- ☐ 16" Simrad NSO evo3S Electronics/Navigation Package (replaces standard 12" Simrad NSX display), Simrad NSO evo3S 16" screen (GPS, chart plotter, fishfinder), Active Imaging 3 in 1 transom mount transducer (CHIRP, SideScan, DownScan)
- ☐ Radar dome, Simrad HALO24 4 kW 24" high definition digital dome
- ☐ VHF radio, Simrad RS40 VHF radio with AIS and HS40 wireless handset
- ☐ Thru hull transducer
- ☐ Satellite weather and radio (requires monthly subscription), satellite radio Sirius® satellite receiver with antenna, Simrad WM-4 Sirius Marine Weather Receiver
- ☐ VesselView 4" display (network connections to Simrad with Navigation Package)
- ☐ Auto pilot (Not compatible with Joystick Piloting), Simrad NAC-2 autopilot computer
- ☐ VHF radio – Simrad RS40 VHF radio with AIS and HS40 wireless handset

EXTERIOR UPHOLSTERY COLOR

- ☐ Shore (Tan) (Standard) – All exterior upholstery (based on option selection), console dash tan gel coat
- ☐ Sea (Gray) – All exterior upholstery (based on option selection), console dash gray gel coat

CANVAS

- ☐ Canvas Cover Package (black or blue) – includes: console cover, console cover with backrest covers, leaning post cover, stern seat backrest cover
- ☐ Premium Canvas Cover Package (black or blue) (must select Premium Package) – includes: bow cushion cover, console cover with backrest covers and stern seat backrest cover
- ☐ Standard Canvas Cover Package (black or blue) – includes: console cover and leaning post cover
- ☐ Wing curtains (black or blue) (hardtop only)

GELCOAT HULL SIDE COLORS (WITH WHITE HULL BOTTOM)

- ☐ Classic Desert Tan
- ☐ Glacier Green
- ☐ Light Blue
- ☐ Platinum

COLOR PAINTED HULLS

- ☐ Abaco Blue
- ☐ Fighting Lady Yellow
- ☐ Horizon Blue
- ☐ Ice Blue
- ☐ Jadestone
- ☐ Oyster Gray
- ☐ Platinum
- ☐ Sand Metallic
- ☐ Steel Blue
- ☐ Tectonic Silver
- ☐ Wasabi





**PETREL GLOBAL SHIPS
& BOATS TRADING LLC**

Business Village-Block B 3d Floor, office
309-310, 221 Al Maktoum Rd, Dubai, UAE
www.petrel-global.com, tel.: +971 52 821 6411

280 OUTRAGE

16



BOSTON
WHALER

MERCURY



**PETREL GLOBAL SHIPS
& BOATS TRADING LLC**

Business Village-Block B 3d Floor, office
309-310, 221 Al Maktoum Rd, Dubai, UAE
www.petrel-global.com, tel.: +971 52 821 6411

280 OUTRAGE

BOSTON
WHALER



**PETREL GLOBAL SHIPS
& BOATS TRADING LLC**

Business Village-Block B 3d Floor, office
309-310, 221 Al Maktoum Rd, Dubai, UAE
www.petrel-global.com, tel.: +971 52 821 6411

280 OUTRAGE

18