

Custom Line Navetta 50 project



**PETREL GLOBAL SHIPS
& BOATS TRADING LLC**

Office 621, 6th Floor Block A, Business Village.
Port-Saeed Deira, Dubai UAE
www.petrel-global.com, tel.: +971 52 821 6411

we see
a symbol of majesty.







A new era in contemporary cruising is beginning, with the new flagship of our fleet: the **Custom Line Navetta 50**. **Our first all-aluminium vessel** is a masterpiece that reinvents nautical tradition with a sophisticated touch that plays on the brand's values, character and heritage.





Speed

16 knots

maximum speed

4000 Nm

Range at

10 knots

A 50-metre
aluminium dream
that revolutionises
the sub-500 GT segment





Each deck has a character all its own, culminating in a cascade of gorgeous terraces over the water, to enjoy privately or with guests at any time of day.





we see
a space
of pure comfort.





Outdoor
and indoor
interior design

794 sqm

of on-board spaces, inside and out

110 sqm

Sun Deck

75 sqm

Owner's suite

Four decks with
unprecedented space
for unrivalled comfort
and wellbeing







The luminous **upper-deck saloon** creates a strong sense of continuity between inside and out, as the large floor-to-ceiling windows and mirrored surfaces break down any visual barriers and add to the feeling of space.



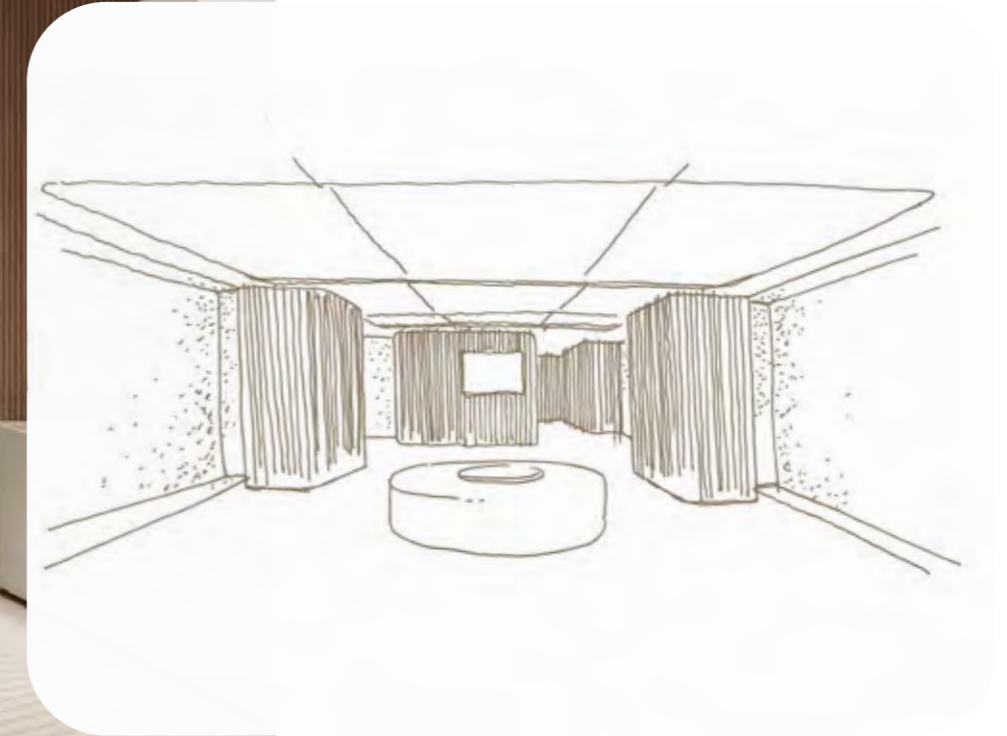


The **heart** of the Custom Line Navetta 50 is the **upper-deck** owner's apartment. Its innovative positioning offers stunning **180-degree views** through full-height windows that bathe the whole room in natural light.

The owner's suite leads directly to the **owner's spectacular private patio**. This ample, exclusive space at the bow features a sunset solarium complete with couch and seafront sun pad.







In the superb, sophisticated large saloon on the main deck, sunlight is always a welcome guest. The **tall, sweeping windows** allow the gaze to roam, for an endless sensation of **intimacy with the sea.**





The fabulous **beach club** is your own private waterfront – a delightful space connected directly to the aft outdoor area on the main deck via a **rectangular pool** and on to the glass-walled interiors.



Supremely equipped:
aboard the Custom Line
Navetta 50, the lower
and upper decks
are linked by a lift.



The yacht's spaces have been carefully conceived for **relaxed liveability** in palatial comfort. The generous, elegant guest cabins vaunt configurable beds and sublime materials like natural hides and leathers.



Technical data

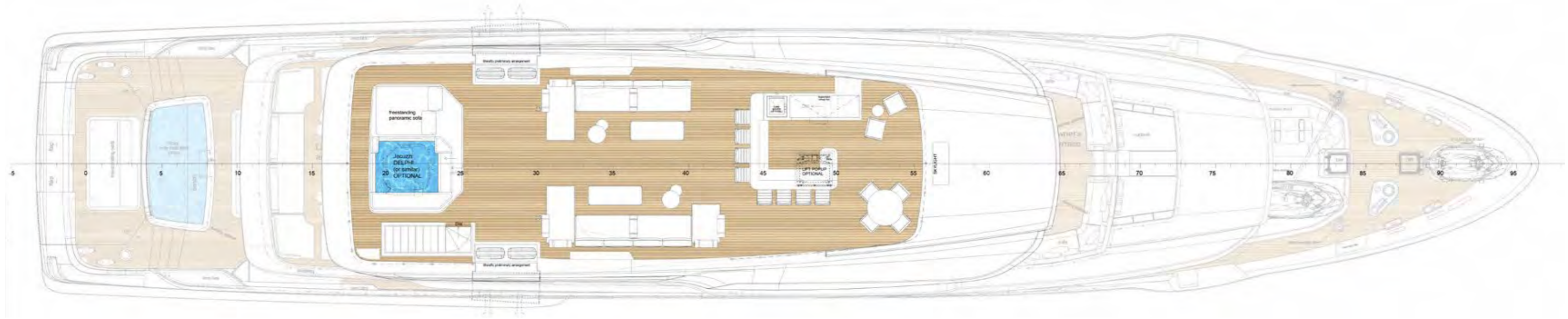
Preliminary

SHIPYARD	FERRETTI GROUP SUPERYACHT YARD
Yard ID Number	NA50
Hull/superstructure	Aluminium
Type	Displacement Hull, bulbous bow
Length Over All	49.9 m 163,84 ft
Beam Over All	9.60 m 31,49 ft
Depth to Main Deck	4.10 m 13,45 ft
Draft full load (above baseline)	2.20 m 7,22 ft
Displacement full load	430 ton 947988 lbs
Gross tonnage	< 500 GT
Guest	N° 10 (max 12 when chartering) - 4 vip/guest cabins + 1 owner suite
Crew	N° 9

Fuel Capacity	55'000 lt 14530 US gal
Water Capacity	10'000 lt 2640 US gal
Black and Grey water Capacity	9'000 lt 2377 US gal
Fresh Water Production	12.000 liters/day
Engines	2 x CAT C32 ACERT 1081kW @ 2050-2150 rpm
Main generators	2 x CAT 118 ekW, 400V- 50 Hz
Max speed	16.0 knots
Range at 10 knots	4.000 Nm
Naval Architecture	Ferretti Group Superyacht Yard
Exterior Design	Filippo Salvetti
Interior Design	Antonio Citterio Patricia Viel
Classification	RINA C * HULL • MACH, Ych Unrestricted
Stabilization	4 x Zero speed fins stabilizers
Tenders + Jet skis	
(Owner's supply):	Williams DIESELJET 625 + 2 Jet skis Seadoo RXP



Sun deck



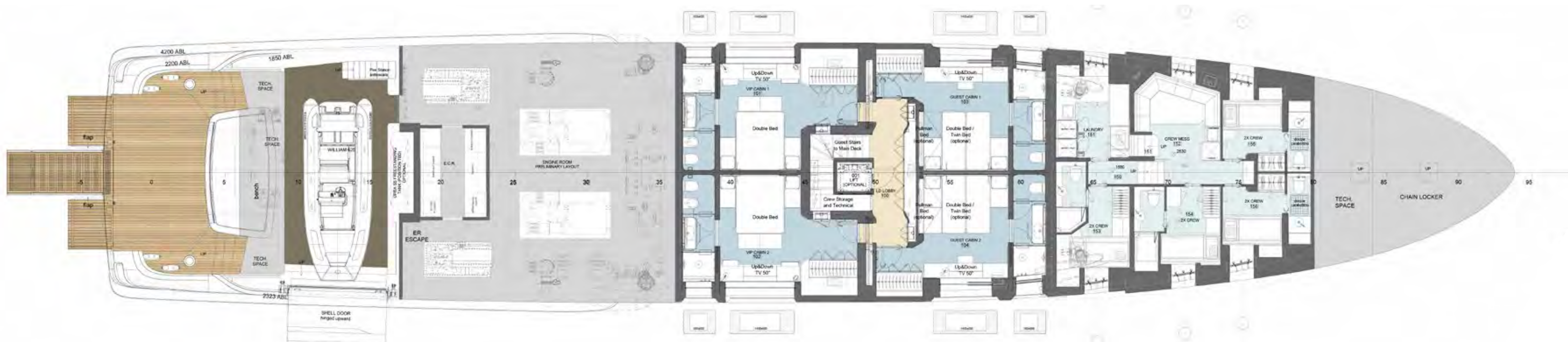
Upper deck



Main deck



Lower deck







Leading the Future

Creating Greatness

This is our commitment as a luxury yachting group. This is the spirit that drives us, individually and collectively. This is the value we bring for our employees, our brands, our clients and society as a whole.

Striving for Innovation

Ferretti Group delivers excellence through constant innovation and pioneering technology. This is how we achieve formidable performance and safety at sea, offering clients authentic experiences to satisfy their desires for affirmation and self-expression.

Going Global

Ferretti Group always endeavours to be close to the market and to our customers, doing whatever it takes to deliver exceptional performance. We have built up an agile, resourceful international dealer network, supported by high-end marketing initiatives to enhance our brands' worldwide visibility and profile.

Empowering Expertise

We continually spur each of our brands to go further. We leverage their special know-how, artisanal accomplishment and technological expertise to stay at the cutting edge of the nautical world.

Creating Value

We focus our energy and resources on supporting our brands in their long-term development, further boosting their ability to create value. This has earned us extraordinary success over the years, helping the group become a pre-eminent player in today's yachting sector.

Softening our impact on the environment

Ever aware of the need to consider the environmental and social side-effects of our products and processes, Ferretti Group publishes a Sustainability Report every year. This document maps the main impacts of our activities and outlines the initiatives in place towards more sustainable development.



PERSHING

itama

Riva

CRN

CUSTOM LINE



**PETREL GLOBAL SHIPS
& BOATS TRADING LLC**

Office 621, 6th Floor Block A, Business Village.
Port-Saeed Deira, Dubai UAE
www.petrel-global.com, tel.: +971 52 821 6411