

WALLY
W

w a l l y w h y 5 0 0



**PETREL GLOBAL SHIPS
& BOATS TRADING LLC**

Office 621, 6th Floor Block A, Business Village.
Port-Saeed Deira, Dubai UAE
www.petrel-global.com, tel.: +971 52 821 6411



B e a u t y i n s i g h t

The wallyace500 is all about covered outdoor living and the brand's famous inside-outside lifestyle offering shade for the 308sqm of open air living

space. A 75sqm beach club lies just 80cm above the water and there is a dedicated garage amidships designed for a 7m tender.









Fit and fun

for everyone





The wallyace500 stands out for her versatility with her 100sqm multi-purpose upper deck which serves for all fresco workouts, dining, lounging and everything in between.

Endless
on-the-water
experience





Sliding full height glass flood the simple yet sophisticated interior styling with natural light, enhancing the on-board relaxed atmosphere.





Do it all

ace it all



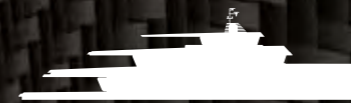
wallyace 500



R&D
2,000 hours of
naval architecture
and design

**FREE
SPIRIT**
5,000nm of
independence

**TIME
STRETCHING**
25-hour days



PIEDS-DANS-L'EAU
75sqm beach = 19 ping-pong tables

HIGH AND SAFE
4,7m high stempost = London double decker bus

OPEN-AIR ENJOYMENT
300sqm outdoor living = 2 volleyball courts

SILENCE IS GOLDEN
44 dB at anchor = noise inside a library
52 dB cruising = noise of a conversation



SHARING THE EXPERIENCE
10-12 guests

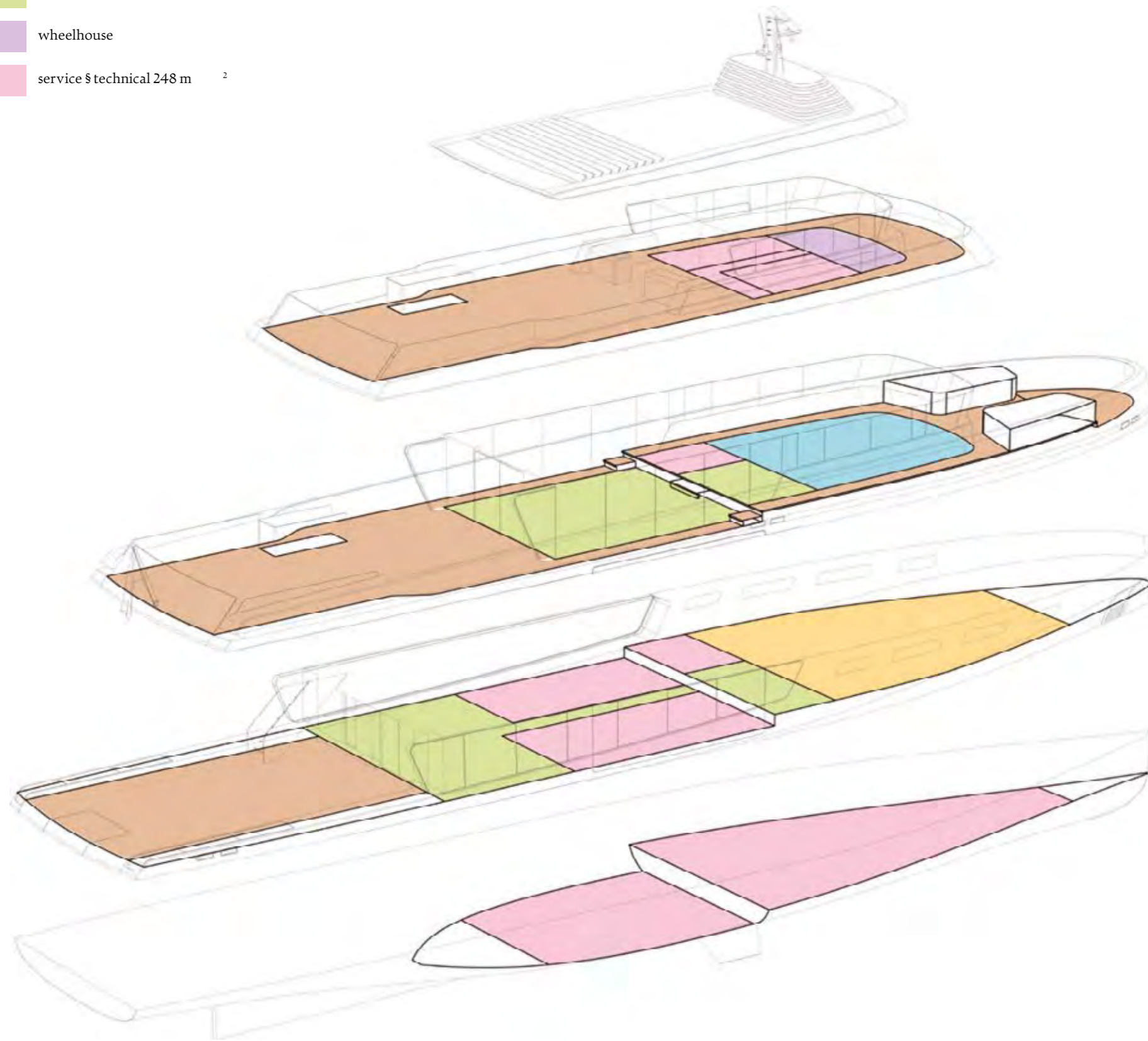
FIVE STAR SERVICE
10 crew members



PLAYING GROUND
1 laser
2 kayak
2 SUP
2 jetski

SCOUT & CARRY
7m tender

- owner 45 m²
- guests 74 m²
- open air living 308 m²
- interior living 114 m²
- wheelhouse
- service & technical 248 m²



SUN DECK
Wheelhouse
Captain's cabin
Navigation room
Pantry
Outdoor lounge & bar

UPPER DECK
Owner's suite
Foyer
Pantry
Living room
Outdoor lounge & dining

MAIN DECK
Guests staterooms
Foyer
Pantry
Galley
Dining
Spa
Beach

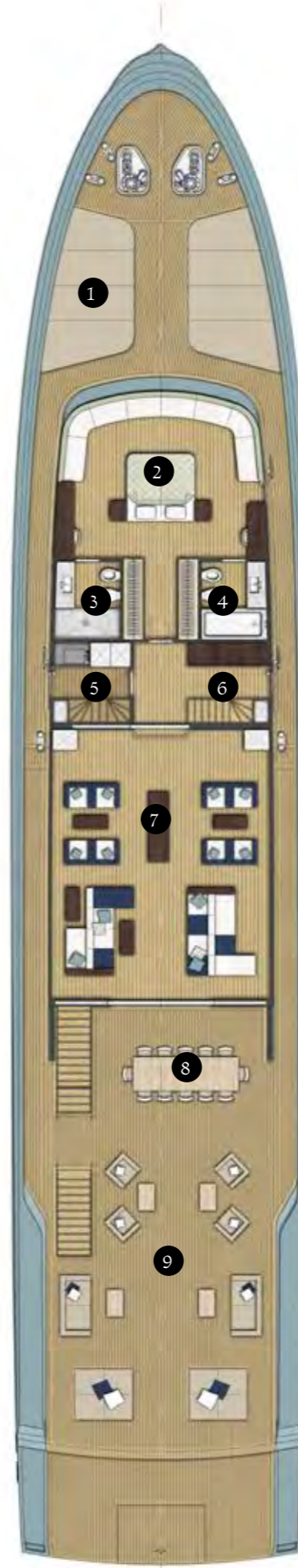
LOWER DECK
Crew cabins
Crew mess
Laundry
Engine and systems room

SUN DECK



- 1 WHEELHOUSE
- 2 NAVIGATION ROOM
- 3 CAPTAIN'S CABIN
- 4 DAY HEAD
- 5 PANTRY
- 6 OUTDOOR BAR
- 7 OUTDOOR LOUNGE
- 8 JACUZZI

UPPER DECK



- 1 FORWARD LOCKERS
- 2 OWNER'S SUITE
- 3 EN-SUITE (HIS)
- 4 EN-SUITE (HERS)
- 5 PANTRY
- 6 FOYER
- 7 LIVING ROOM
- 8 OUTDOOR DINING
- 9 OUTDOOR LOUNGE

MAIN DECK



- 1 GUEST STATEROOM 1
- 2 GUEST STATEROOM 2
- 3 GUEST STATEROOM 3
- 4 GUEST STATEROOM 4
- 5 PANTRY
- 6 FOYER
- 7 GALLEY
- 8 TENDER GARAGE
- 9 DINING
- 10 SPA
- 11 BEACH

LOWER DECK 23



- 1 LAUNDRY
- 2 CREW CABIN 1
- 3 CREW CABIN 2
- 4 CREW CABIN 3
- 5 CREW CABIN 4
- 6 COLD STORAGE
- 7 CREW MESS
- 8 CONTROL ROOM
- 9 ENGINE ROOM
- 10 SYSTEMS ROOM

wallyace500

Main technical specifications – PRELIMINARY DATA

GENERAL GUIDANCE AND ADMINISTRATION

Vessel type	Cruising motor yacht displacement type
MAIN DIMENSIONS:	
L.O.A.	40,90 m
Max Beam	9,00 m
Draft Half Load (Preliminary)	2,80 m
Displacement Light Load (Preliminary)	290 tons
Displacement Half Load (Preliminary)	335 tons
Displacement Full Load (Preliminary)	380 tons
Tonnage (preliminary)	495 GRT
Max Speed	15,5 kn
Cruising speeds (Half Load)	12,0 kn
Range at 10 Knots (Preliminary)	3.500 nm
Accommodation	12 guests + 10 crew
Yacht Classification	RINA "C" # HULL · MACH; Y unrestricted as a Pleasure Yacht

YACHT STRUCTURE

Advanced composite sandwich construction made in fiberglass with PVC core

PROPULSION PLANT & MACHINARIES

No.2 main engines CATERPILLAR C32 ACERT 746 kW (1.000 hp) @ 1.800 rpm
No.2 shaft lines with fixed pitch five blades bronze propellers
No.2 stabilizers underway and at anchor, Naiad 2,95 mq
No.2 hydraulic moved rudders

ELECTRIC PLANT

No.2 generators CAT C4.4 86 kW
Yacht PLC Monitor & Control system

COMMAND AND SURVEILLANCE

Navigation system FURUNO (cartography, radar, autopilot, echo-sounder, GPS, weather station, compass)
Communication system FURUNO (VHF, AIS); on board network system; no.1 SatCom antenna

Entertainment system (saloon and Owner cabin: flat TV 65" with 5+1 home theatre system; Guest Cabins flat TV 40" with 2+1 theatre system; crew area: flat TV 26"; deck audio system fwd, aft, sundeck); no.1 SatTv antenna

AUXILIARY SYSTEMS

Air conditioning system in all the cabins, saloons, galley, pantry
Refrigeration system 1,5 m3 cells
No.1 water maker duplex unit IDROMAR 9.000 litres/day
Fresh water tanks 10.000 litres
Fuel tanks 60.000 litres
Water treatment system 3.000 litres/day
Sewage tank 9.000 litres
Centralized bilge system
Bow thruster 75 kW
Electro-hydraulic steering system and joystick manoeuvring system
No.2 anchor systems with anchors on the bow
No.2 mooring capstan

OUTFIT AND FURNISHINGS

Multifunctional retractable boarding ladder & passerelle
Garage amidships with an electro-hydraulic door on the hull side to receive a 5,65 m rib with diesel engine jet launched by means a hydraulic crane
Hull windows made in glass, sliding doors to the aft platform
Decks lined with teak
Hull painted solid colour
Seating and pop up table in the foredeck area. Lounge area and dining table for ten people in the aft cockpit area
Lounge areas, sunbeds and counter with bar at the sundeck shaded by a solid awning
Saloon with dining area for ten people, living area with seating for 12 people
Owner cabin with lounge area, bathrooms with shower and tub, wardrobes
No.4 guest cabins with en-suite bathroom
Galley equipped with household appliances. Crew mess for 8 people
No.4 double berth crew cabins with en-suite bathroom
Navigation area and office
Furniture made in plywood lined with wood veneer or lacquered

The Technical data, performances, designs and graphic reproductions are purely indicative, are not contractual, shall not constitute in any circumstances whatsoever any contractual offer by the shipyard and refer to European standard models of motor yachts built by the shipyard. The only valid technical reference or description is the specific parameters of each motor yacht cited only on purchase of the same. Therefore the only indications binding on the seller are contained solely in the sale agreement and in the relevant specific manual.

WALLY




**PETREL GLOBAL SHIPS
& BOATS TRADING LLC**

Office 621, 6th Floor Block A, Business Village.
Port-Saeed Deira, Dubai UAE
www.petrel-global.com, tel.: +971 52 821 6411